

EML3 LED Emergency Light



The EML3 LED emergency light combines a low-profile, standard design in an affordable package. The EML3 Series is available in white and black and offers universal mounting, a test button with AC indicator, damp location listing, and a remote capable option. With fully adjustable heads, the EML3 Series complements any design application.

Construction

- Injection molded thermoplastic ABS housing.
- White and Black finishes available.
- UL-94v-0 Flame rating - Flame Retardant
- Adjustable heads for aiming light where required
- Head tilt: +25°-90°
- Head rotation: 330°
- Damp location rated
- Operating temperature: 32°F - 104°F (0°C - 40°C)

Optical System

- Precision engineered Prismatic Lens

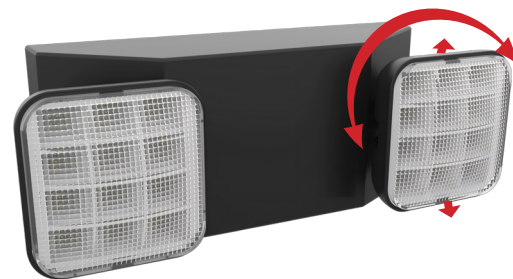
Electrical

- Input power 2.1W at 120/277VAC
- Remote output power 2.4W at 3.6VDC
- Supports up to two (2) single or one (1) double 3.6VDC NICOR remote lamps (see comp. chart)
- 90 minute capacity (including remote lamps)

Mounting and installation

- Easy installation into a standard junction box or conduit
- Universal mounting plate with EZ quick connect

 Input Voltage (VAC) 120/277	 Power Draw (W) 2.1	 Emergency Battery 90 minutes
---	---	---



+25°/-90° TILT WITH 330° ROTATION

With fully adjustable heads the EML3 can accommodate any application for the best lighting in emergency situations.

Ordering Information

Example: EML310UNVWH

Series	Version	Voltage	Housing Color	Remote Lamp Option
EML3	10 (1.0)	UNV (120/277V)	WH (White)	BLANK (non-remote)
			BK (Black)	R (remote lamp capable)