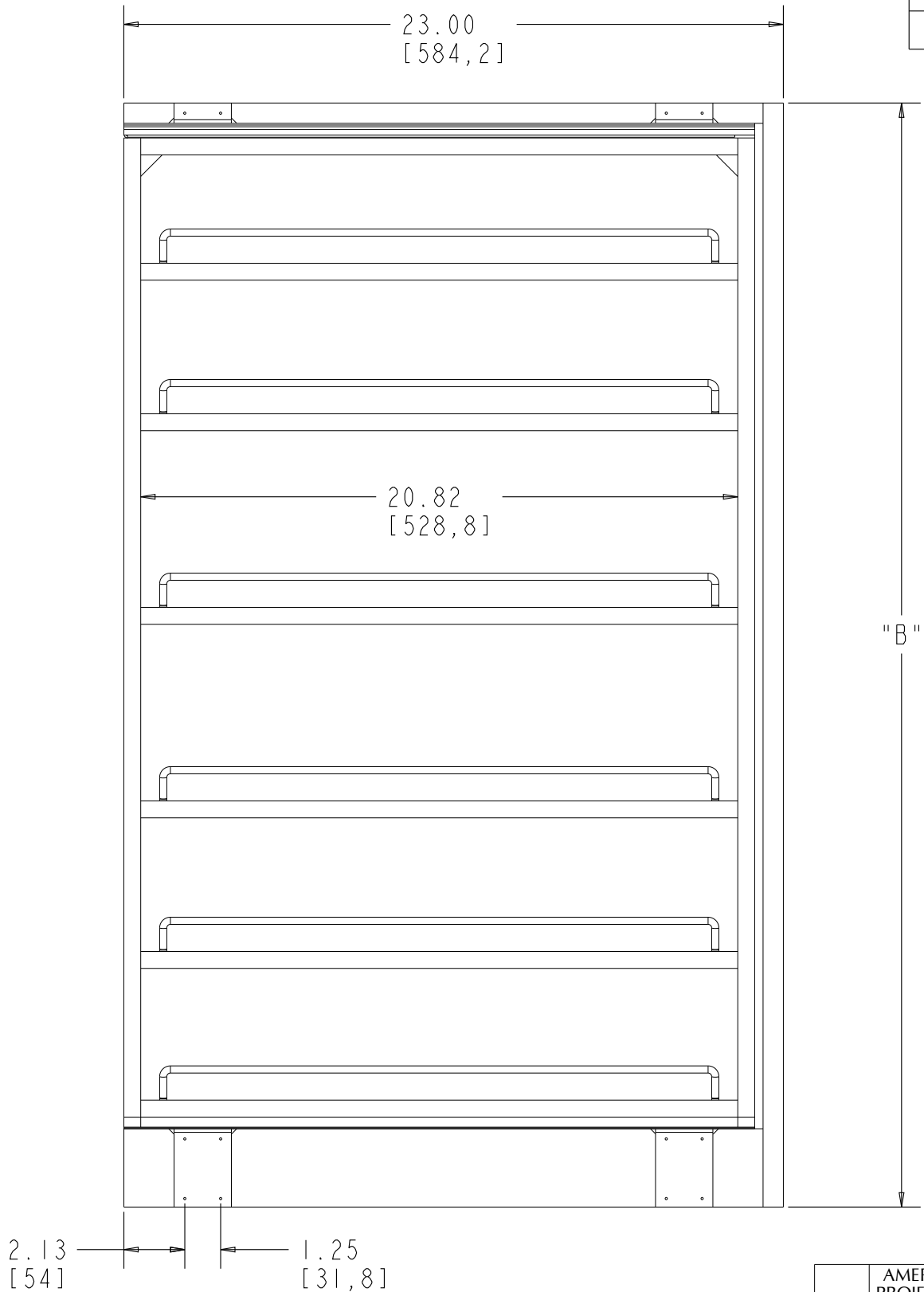
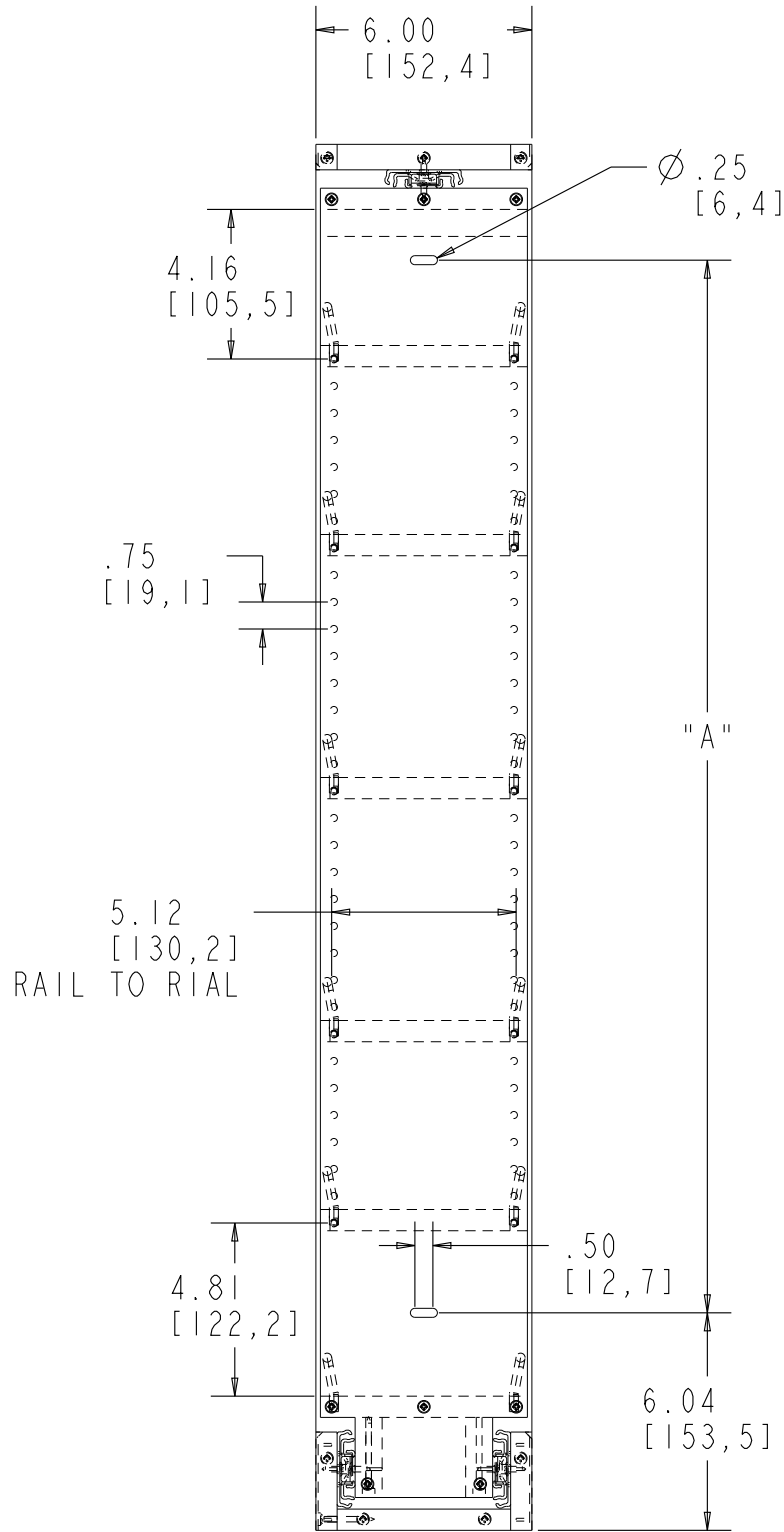


PART NUMBER	"A"	"B"
432FH639	29.24 [742.7]	38.50 [977.9]
432FH645	35.24 [895.1]	44.50 [1130.3]

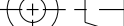


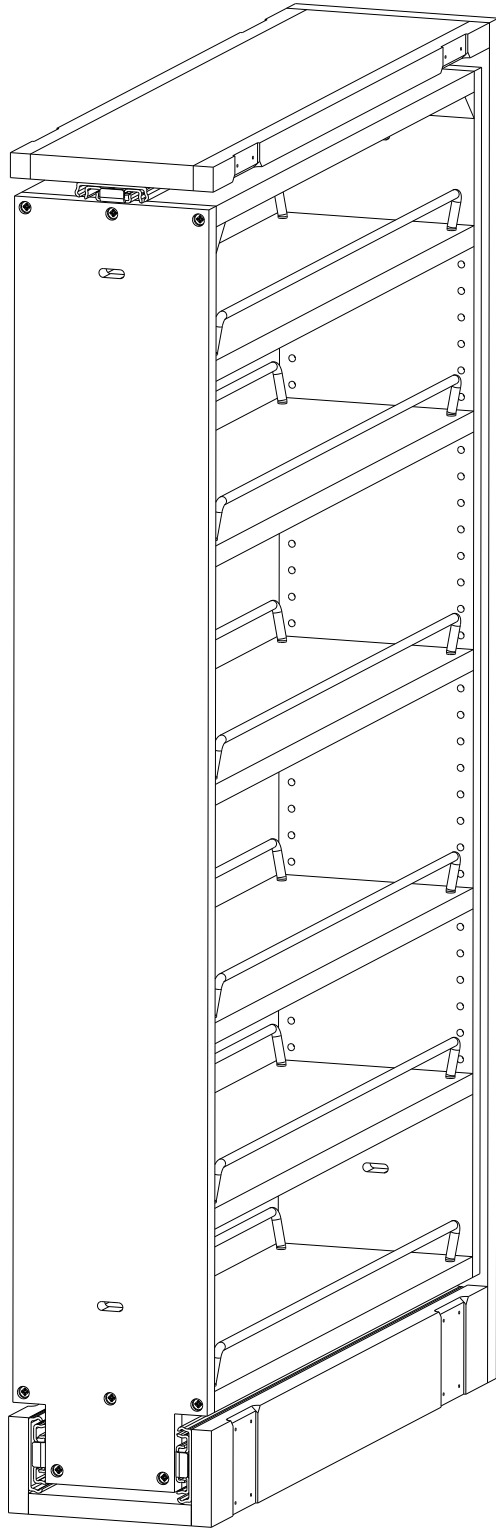
- NOTES:
- SEE 432 SERIES FILLER PULL-OUT INSTRUCTIONS FOR INSTALLATION.
 - RECOMMENDED SCREW SIZE FOR INSTALLATION #8 X 1 1/4".

CUSTOMER DRAWING

This drawing is the property of Rev-A-Shelf (RAS) and is disclosed in confidence to the extent its subject matter is original to RAS. Any vendor receiving this drawing from RAS shall hold and use this drawing for the sole benefit of RAS and shall not disclose it to, or use or reproduce it for any third party, or perform any act adverse to the interest of RAS with respect to this drawing without the express written permission of RAS. Vendors shall not revise any physical, dimensional or performance characteristic unless authorized by Rev-A-Shelf Engineering.

REV.	DATE	BY	DESCRIPTION OF CHANGE
C	6/14/16	DKK	ECN16-043
B	5/30/08	PFC	ECN08-038
A	3/5/08	PFC	ECN08-018

INCH [MM]	AMERICAN PROJECTION 		BY	DATE	REV-A-SHELF®, INC.	
		DRAWN	PFC	1 / 4 / 07	SIZE B	FULL HEIGHT FILLER CHROME RAILS
TOLERANCES MAT. DEC. (WOOD) .XX ±.03 [.8mm] (OTHER) .XX ±.02 [.5mm] (ALL) .XXX ±.005 [.13 mm] FRACTIONS ±1/32 [.8 mm]		ANGLES ±1/2°	MATERIAL		DRAWING NO. 432FH6XX-CUSTOMER	SCALE 3 : 16
			FINISH		PART NO. 432FH6XX	SHEET OF 1 2



PART DIMENSIONS	
WIDTH	6.00 [152,4]
DEPTH	23.00 [584,2]
HEIGHT 432FH639	38.50 [977,9]
HEIGHT 432FH645	44.50 [1130,3]

MIN CABINET OPENING	
WIDTH	N/A
DEPTH	N/A
HEIGHT	N/A

PRODUCT MAX WEIGHT RATING
BMHA STANDARDS


SLIDE SPECIFICATIONS				
SLIDE TYPE	BALL BEARING	SLIDE EXTENSION	FULL	MAX WEIGHT RATING
SLIDE CLOSING	N/A	SLIDE LENGTH	560MM	
SLIDE MOUNTING	N/A	SLIDE FINISH	ZINC	150 LB

- NOTES:
- SEE 432 SERIES FILLER PULL-OUT INSTRUCTIONS FOR INSTALLATION.
 - RECOMMENDED SCREW SIZE FOR INSTALLATION #8 X 1 1/4".

CUSTOMER DRAWING

This drawing is the property of Rev-A-Shelf (RAS) and is disclosed in confidence to the extent its subject matter is original to RAS. Any vendor receiving this drawing from RAS shall hold and use this drawing for the sole benefit of RAS and shall not disclose it to, or use or reproduce it for any third party, or perform any act adverse to the interest of RAS with respect to this drawing without the express written permission of RAS. Vendors shall not revise any physical, dimensional or performance characteristic unless authorized by Rev-A-Shelf Engineering.

B	5/30/08	PFC	ECN08-038
A	3/5/08	PFC	ECN08-018
REV.	DATE	BY	DESCRIPTION OF CHANGE

INCH [MM]	AMERICAN PROJECTION 		BY	DATE	REV-A-SHELF®, INC.		
		DRAWN	PFC	1/4/07	SIZE B	FULL HEIGHT FILLER CHROME RAILS	
<i>TOLERANCES</i> MAT. DEC. (WOOD) .XX ±.03 [.8mm] (OTHER) .XX ±.02 [.5mm] (ALL) .XXX ±.005 [.13 mm] FRACTIONS ±1/32 [.8 mm]		ANGLES ± 1/2°	MATERIAL		DRAWING NO. 432FH6XX_CUSTOMER	SCALE 3:16	
			FINISH		PART NO. 432FH6XX	SHEET OF 2 2	