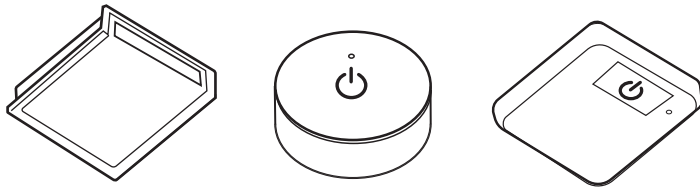


## READ ALL INSTRUCTIONS BEFORE INSTALLING SYSTEM.

Before beginning installation, ensure power is turned OFF to the light system or it is unplugged.



Tresco Wireless PowerSync Controllers Can be Paired With The Receiver Below (Specifications on Page 2)

### Receiver Specifications:

Output Voltage: 12/24VDC

Max Output Load: 5A, 12V/60W, 24V/96W

Dimming Range: 100% - 1%

### Programming Instructions:

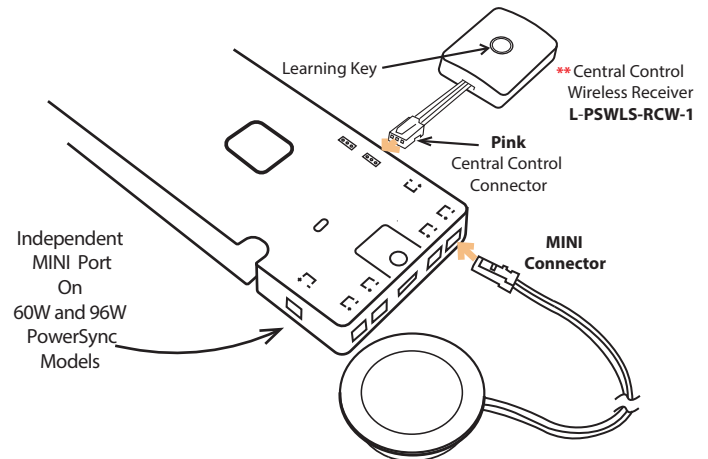
1. Connect PowerSync Central Control Wireless Receiver (**L-PSWLS-RCW-1**) to the power supply Central Control Port (Pink Port) (Figure 1) to control the entire power supply and up to 10 linked power supplies with the exception of the Individual MINI Ports (Orange Port) (Figure 2).
2. Insert Battery into your Wireless Controller (see page 2).
3. Plug the Power Supply into the wall outlet. If controlled by a wall switch, turn the switch ON after plugging in the power supply.
4. Press briefly (do not hold) the receiver learning key, the LED light will flash once. Then press briefly the Controller's Learning Key, the LED light will flash 3 times, indicating the pairing is successful.

\*\*\*One receiver can be paired with up to 8 controllers.

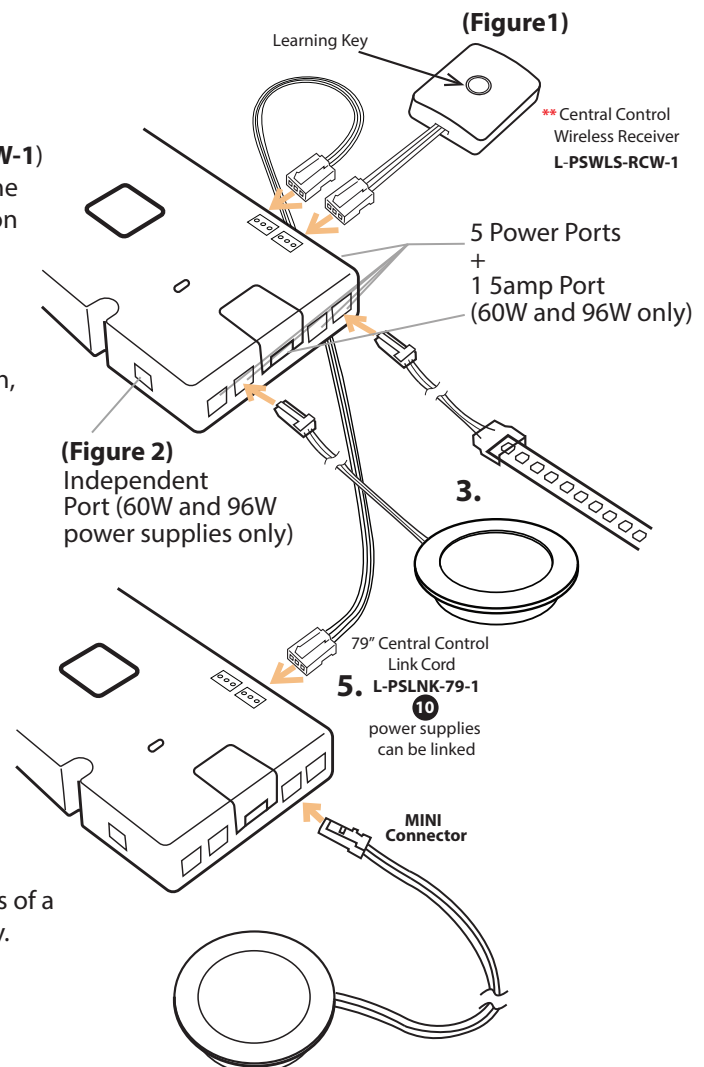
### How to Unpair a Receiver:

1. Hold down the Learning Key on the Receiver until the connected lights flash 3 times.
2. The receiver is now reset and unprogrammed.
3. Repeat Programming Instructions to pair new controllers

**\*\* WARNING:** Using more than 1 receiver on the pink central control ports of a power supply will damage the units and void the manufacturer's warranty. The pink central control ports intended use is for one control component and a linking cord or 2 linking cords.

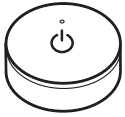


OR

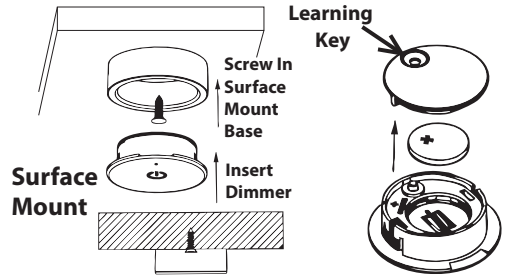
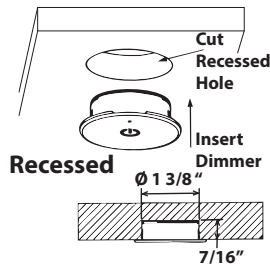


## PowerSync Wireless Controllers

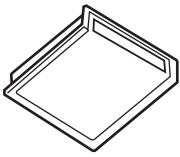
### Round Style



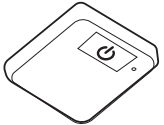
**L-PSWLS-CRD-BL-1  
or L-PSWLS-CRD-NI-1**  
Round Dimmer in  
Black and Nickel finishes  
CR2032 Battery  
2.4G Radio Application  
RF Remote Distance: <30 feet



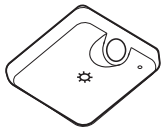
### Square Style



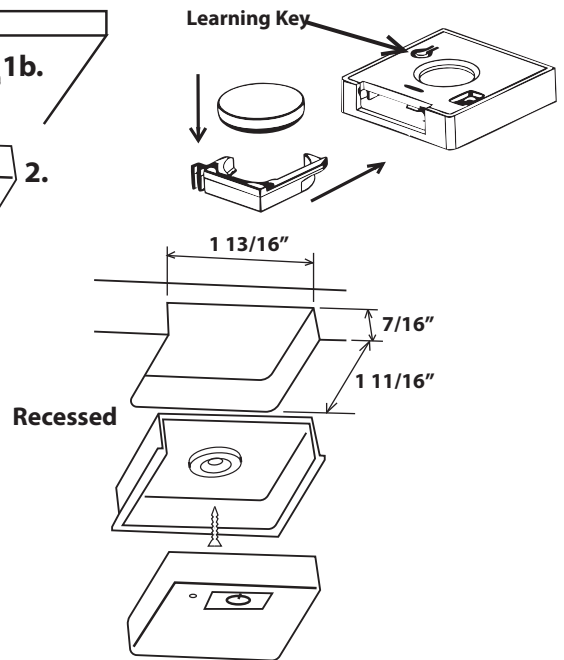
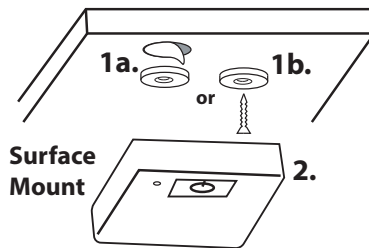
**L-PSWLS-CDS-1**  
Door Sensor in Nickel Finish  
(door open = light on)  
Recessed or Surface Mount



**L-PSWLS-CTD-BL-1  
or L-PSWLS-CTD-NI-1**  
Touch Dimmer in  
Black or Nickel Finish  
Includes recess mount base  
Recessed or Surface Mount



**L-PSWLS-CMS-BL-1  
or L-PSWLS-CMS-NI-1**  
Motion Sensor in  
Black or Nickel Finish  
(human motion detection)  
Light stays on for 45 seconds  
Recessed or Surface Mount



## Important Safety Instructions

### CAUTION:

To reduce the risk of fire, electric shock, or injury

- For dry locations only.
- Secure cords properly; avoid pinching/damage.
- Use only insulated staples or plastic ties to secure cords.
- Use Class 2 or LPS, 12VDC or 24VDC Power Supply.
- Controller outputs: 12VDC (36W max) or 24VDC (72W max).
- Not intended for enclosed installation into ceilings/soffits.
- Licensed electrician required for installation through ceilings/walls.
- Follow all NEC wiring regulations.