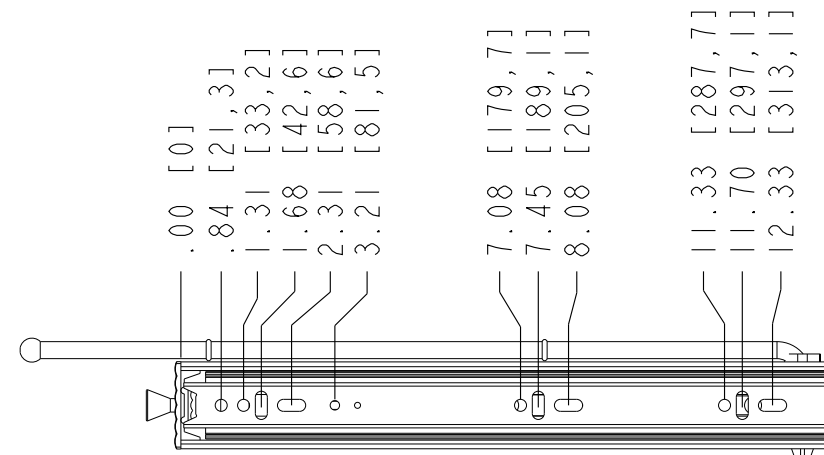
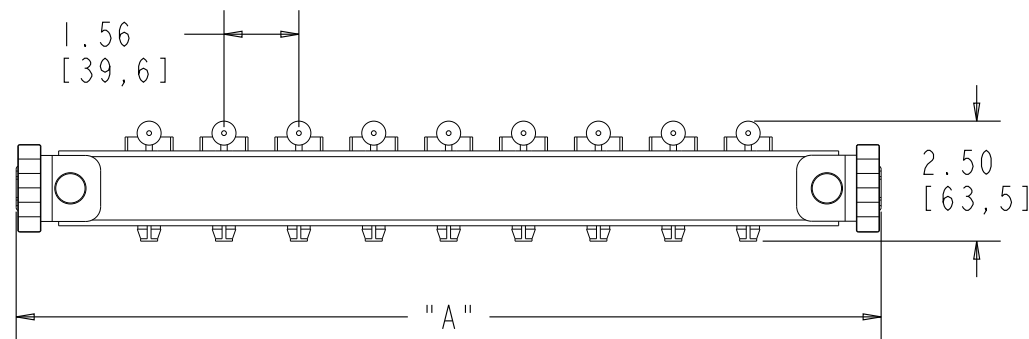
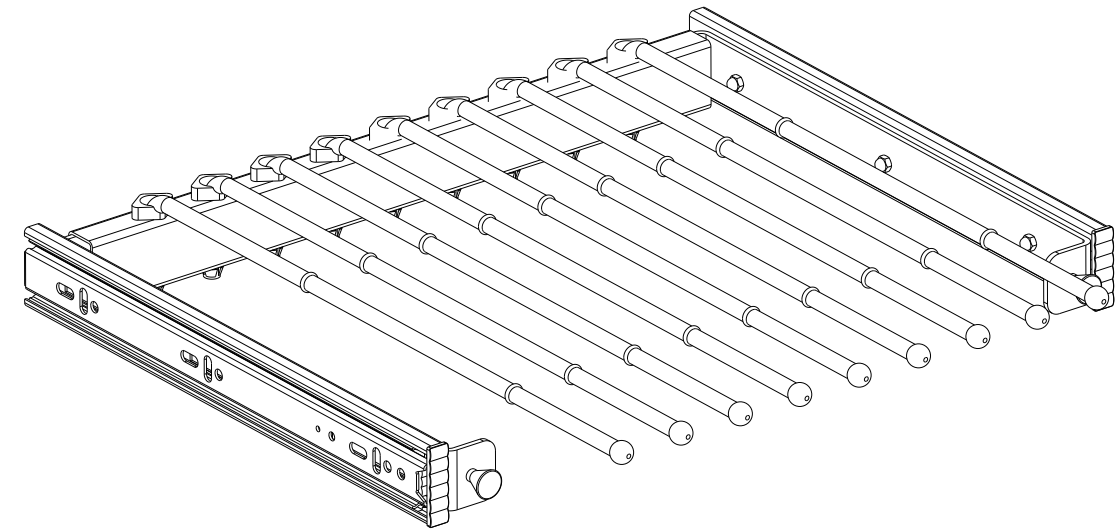
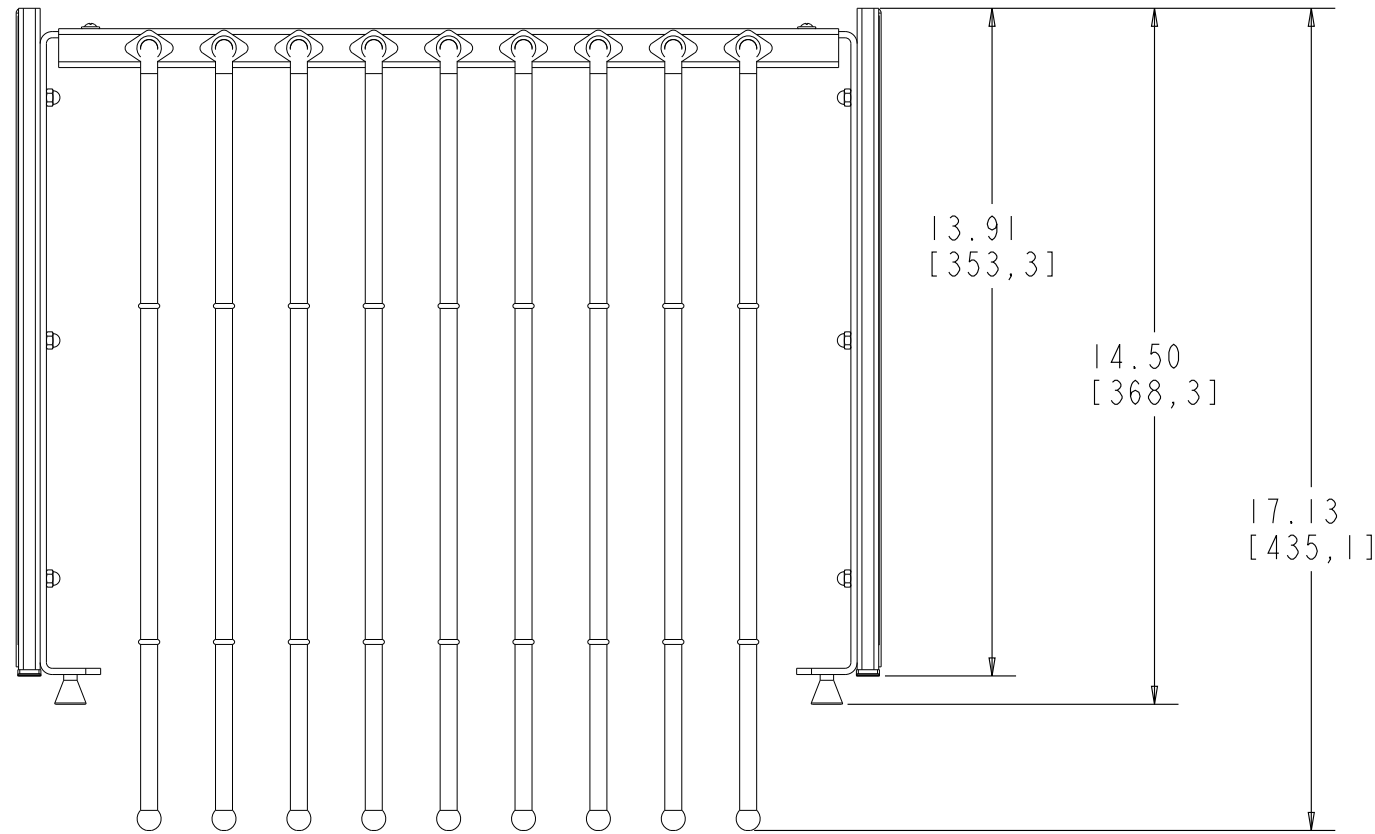


SLIDE SPECIFICATIONS

SLIDE TYPE	BALL BEARING	SLIDE EXTENSION	FE	MAX WEIGHT RATING 100 LB
SLIDE CLOSING	N/A	SLIDE LENGTH	350mm	
SLIDE MOUNTING	SIDE	SLIDE FINISH	ZINC PLATED	

PART NO.	MIN "A"	MAX "A"
PSC-1814CR	17.50 [444,5]	18.13 [460,4]
PSC-2414CR	23.75 [603,3]	24.50 [622,3]
PSC-3014CR	29.75 [755,7]	30.50 [774,7]



CUSTOMER DRAWING

This drawing is the property of Rev-A-Shelf (RAS) and is disclosed in confidence to the extent its subject matter is original to RAS. Any vendor receiving this drawing from RAS shall hold and use this drawing for the sole benefit of RAS and shall not disclose it to, or use or reproduce it for any third party, or perform any act adverse to the interest of RAS with respect to this drawing without the express written permission of RAS. Vendors shall not revise any physical, dimensional or performance characteristic unless authorized by Rev-A-Shelf Engineering.

REV.	DATE	BY	DESCRIPTION OF CHANGE

INCH [MM]	AMERICAN PROJECTION	BY	DATE	REV-A-SHELF, INC.	
		SLW	2/14/07	SIZE	PANT RACK PULLOUT 14" DEEP
TOLERANCES		MATERIAL		DRAWING NO.	SCALE
MATERIAL (WOOD) .XX ±.03 [8mm] (OTHER) .XX ±.02 [5mm] (ALL) .XXX ±.005 [13mm] FRACTIONS ±1/32 [8mm]		CHROME		PSC-XX14CR	0.250
ANGLES ±1/2°		FINISH		PART NO.	SHEET OF
				PSC-XX14CR	1 OF 1