

# Swidget



## Features:

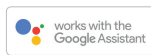
Future Proof - convenient Over-The-Air (OTA) upgrades allow you to expand capabilities right from your Swidget App

Modular System - interchangeable inserts allow you to swap technologies as your needs change or new technology emerges

Compatible with all Tresco® low voltage LED lighting

More Power for High Current Devices - 20A Outlet offers the largest smart capacity on the market

User Safe - devices are designed with tamper-resistant outlets and certified Class 2



Interchangeable Wi-Fi Enabled Inserts

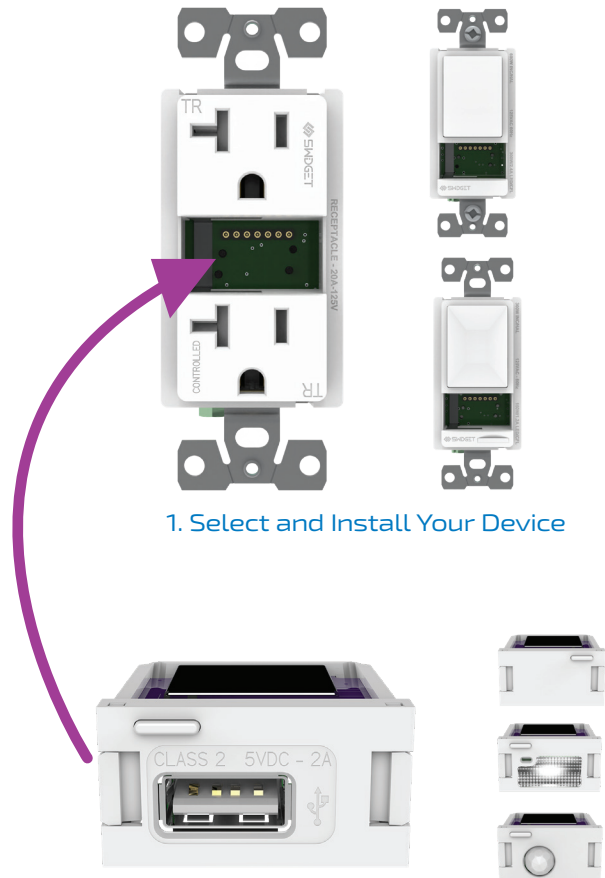


Minimalistic Design

Upgrade your space with a simple swap. Replace your existing switch or outlet with a technology-ready Swidget Device. Add your choice of Wi-Fi enabled inserts and control your lights, program schedules, create scenes, set automations and more with the Swidget App, or pair with Amazon Alexa or Google Home to enable voice commands. A future-proof versatile solution for a connected smart home.

## PLUG & PLAY TECHNOLOGY

Upgrading your space is as easy as 1-2-3.



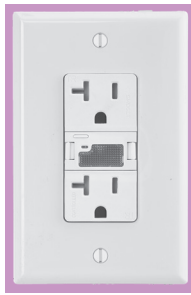
1. Select and Install Your Device

2. Choose Your Desired Insert



3. Control Your Smart Home

# Swidget USE THROUGHOUT THE HOME



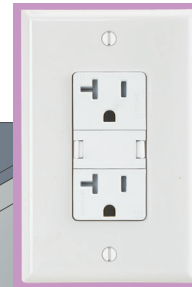
**Night Light**  
20A Outlet with  
Wi-Fi Control + Guide/Night  
Light Insert

*Free up both plugs and add a night  
light directly into your outlet*



**Working Together**  
Standard Switch with Wi-Fi  
Control + Motion Sensor Insert,  
20A Outlet with Wi-Fi Control  
Insert

*Setup devices to trigger one  
another in the Swidget App!  
Connect your Wi-Fi enabled outlet  
and switch so lighting  
automatically turns on and off  
when you enter and leave a room*



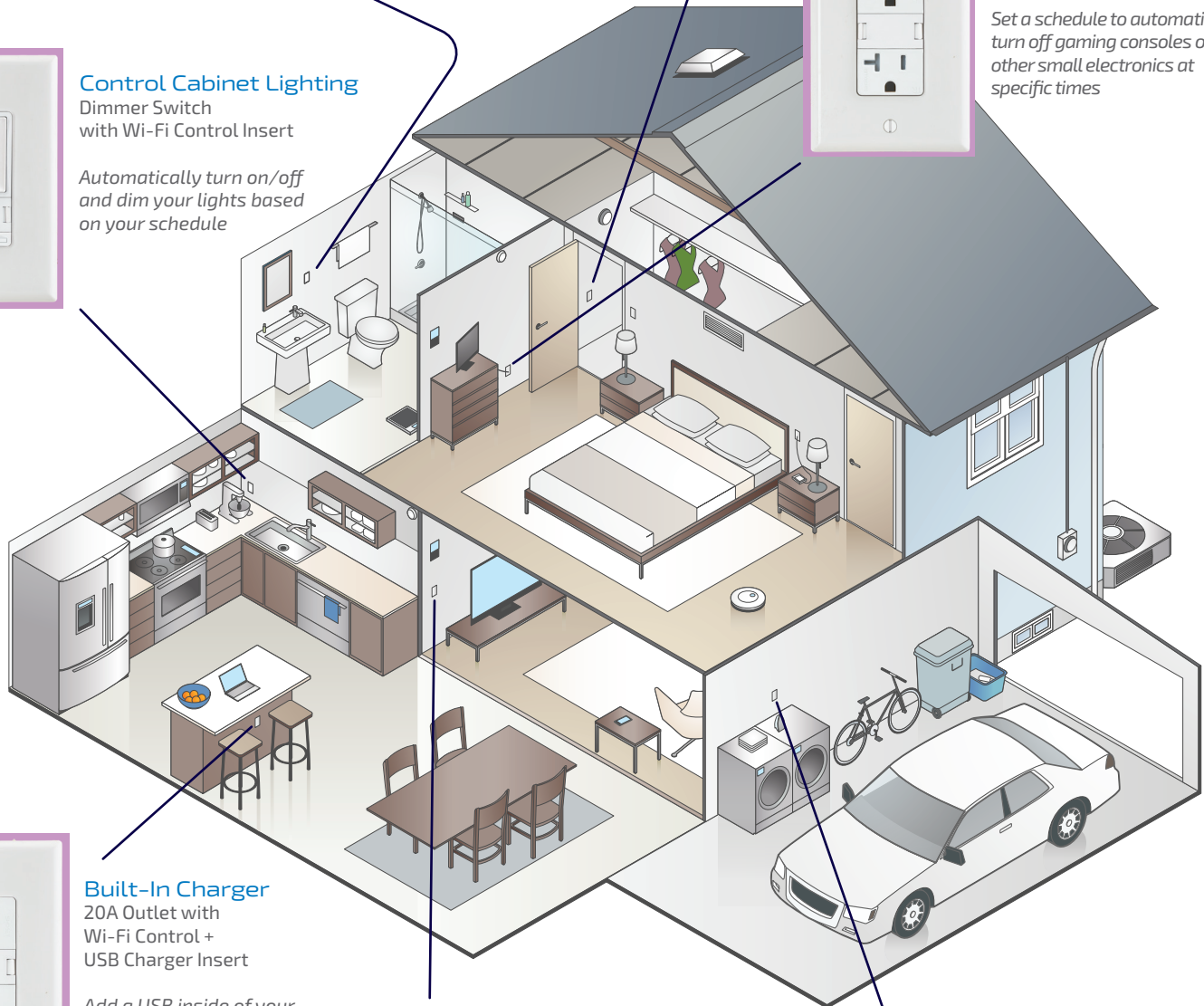
**Parental Control**  
20A Outlet with  
Wi-Fi Control Insert

*Set a schedule to automatically  
turn off gaming consoles or  
other small electronics at  
specific times*



**Control Cabinet Lighting**  
Dimmer Switch  
with Wi-Fi Control Insert

*Automatically turn on/off  
and dim your lights based  
on your schedule*



**Built-In Charger**  
20A Outlet with  
Wi-Fi Control +  
USB Charger Insert

*Add a USB inside of your  
outlet for fast,  
convenient charging*



**Vacation Schedule**  
Dimmer Switch with  
Wi-Fi Control Insert

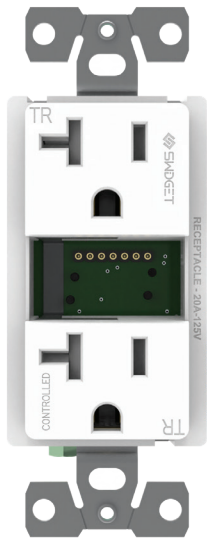
*Set lights to automatically  
turn on/off at different times  
of the day while you are away*



**Automatic Lights**  
Standard Switch with  
Wi-Fi Control +  
Motion Sensor Insert

*Create an automation to  
automatically turn off your  
lights when the garage is  
unoccupied*

### 3 DEVICES TO CHOOSE FROM



20A Outlet



Standard Switch



Dimmer Switch

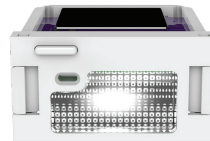
### 4 SWAPPABLE INSERTS TO CHOOSE FROM



Wi-Fi Control



Wi-Fi Control + Motion Sensor



Wi-Fi Control + Guide/Night Light



Wi-Fi Control + USB Charger

Additional special-order items available, contact Tresco® or your local sales representative for more information

### CONTROL YOUR HOME FROM YOUR PHONE



#### Download the App

With knowledge and control at your fingertips, the Swidget App allows you to control your device while monitoring power consumption accurately and in real-time.

- Power On/Off your outlet or switch
- Program schedules, create scenes and set automations
- Monitor your energy consumption and set automatic notifications including when the power consumption is too high
- Connect inserts to trigger one another for a complete smart home system



#### Voice Control

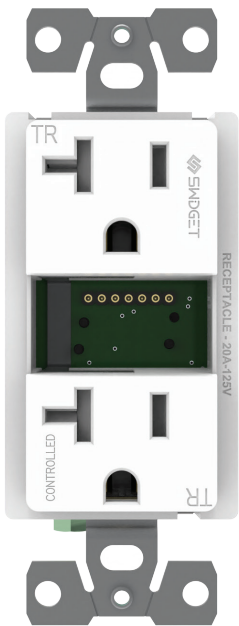
Control your Swidget Wi-Fi connected inserts with your voice using Alexa, Google Assistant and IFTTT enabled devices.



STEP 1: CHOOSE YOUR DEVICE

Install once, upgrade effortlessly. Install your Swidget outlet or switch using your existing wiring and add an insert for smart home functionality without the clutter.

20A OUTLET



Customize your space. The smart-ready outlet gives you control and allows you to monitor your power accurately and in real-time. The only smart device that uses energy insights to provide notification alerts to help save you money and reduce energy consumption.

Features:

Independent direct power monitoring for each of the (2) receptacles

Tamper resistant shutters for safe operation

Neutral wire required for installation

Wireless control of the bottom receptacle with a Wi-Fi enabled insert

Installs like a standard wall receptacle using the same wiring

Indoor use only

5-Year Limited Warranty

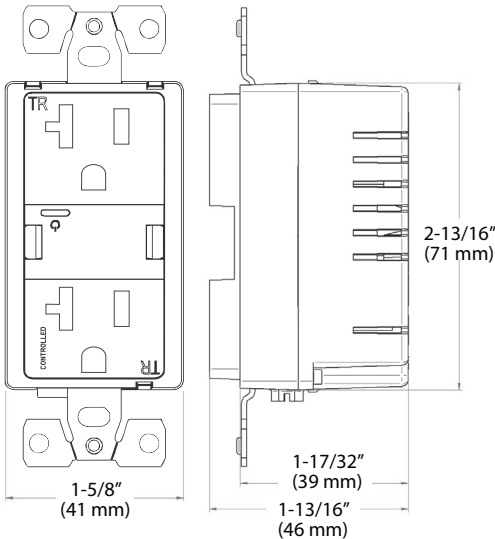
Input Power Rating: 125VAC, 20A  
Outlet Receptacle Configuration: NEMA 5-20R  
Environmental: Indoor only  
Testing and Code Compliance: UL 498 / UL1310, CSA C22.2 #42, #223 (Canada and US)  
Operating Temperature: 14F to 104F (-10C to 40C)



Interchangeable inserts sold separately



Fits all electrical boxes 3" x 2" x 2.5" and larger

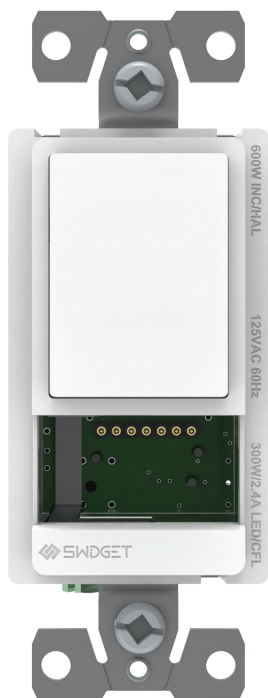


20A Outlet

Part #	Description
L-R1020SWA-1	120VAC 2.4KW Swidget Outlet, w/o Insert, White

Note: Electrician required for install. Works with all standard Rocker Switch plates (not included).

## STANDARD SWITCH



No longer just on or off. The smart-ready switch is a customizable switch designed for lighting and fan applications.

### Features:

Single pole and 3-way wiring compatible for lighting and fan applications

Direct power monitoring

Capability for scene programming with a Wi-Fi enabled insert

Neutral wire required for installation

Indoor use only

5-Year Limited Warranty

Input Power Rating: 125VAC, 5A

LED/CFL Load Rating: 300W

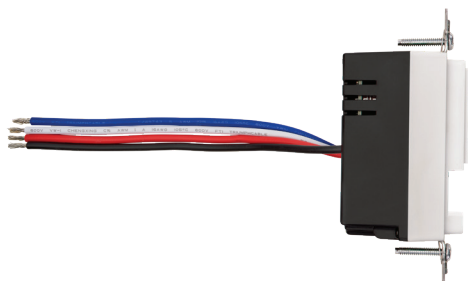
Testing and Code Compliance: UL 498 / UL1310, CSA C22.2 #42, #223 (Canada and US)

Environmental: Indoor only

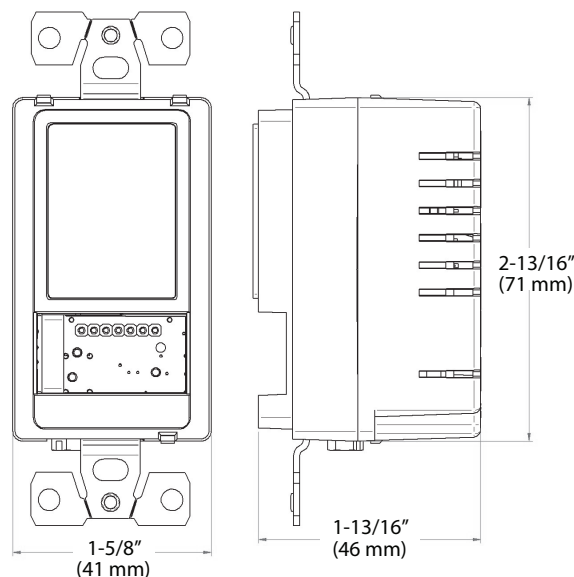
Operating Temperature: 14F to 104F (-10C to 40C)



Interchangeable inserts sold separately



Fits all electrical boxes 3" x 2" x 2.5" and larger



### Standard Switch

#### Part #

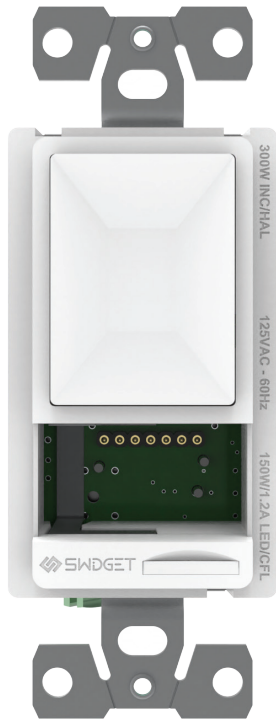
L-S16001WA-1

#### Description

120VAC 300W/600W Swidget Toggle Switch, w/o Insert, White

Note: Electrician required for install. Works with all standard Rocker Switch plates (not included).

## DIMMER SWITCH



Transform your space. The smart-ready dimmer allows you to set the perfect atmosphere in any room.

### Features:

Designed with industry-leading anti-flicker technology for dimmable LEDs

Direct power monitoring

Unique ON/OFF/Dimmer control in a single pad with the capability for scene programming with a Wi-Fi enabled insert

Neutral wire required for installation

Compatible with all Tresco® dimmable power supplies

Indoor use only

5-Year Limited Warranty

Input Power Rating: 125VAC, 2.5A

LED/CFL Load Rating: 150W

Incandescent/Halogen Load Rating: 300W

Number of Poles: Single (1p)

Testing and Code Compliance: UL 1472 / UL1310, CSA C22.2 #184.1, #223 (Canada and US)

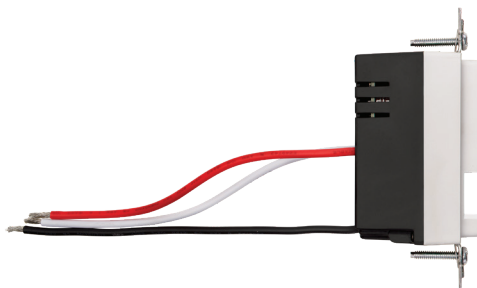
Compatibility: NEMA SSL 7A Compliant

Environmental: Indoor only

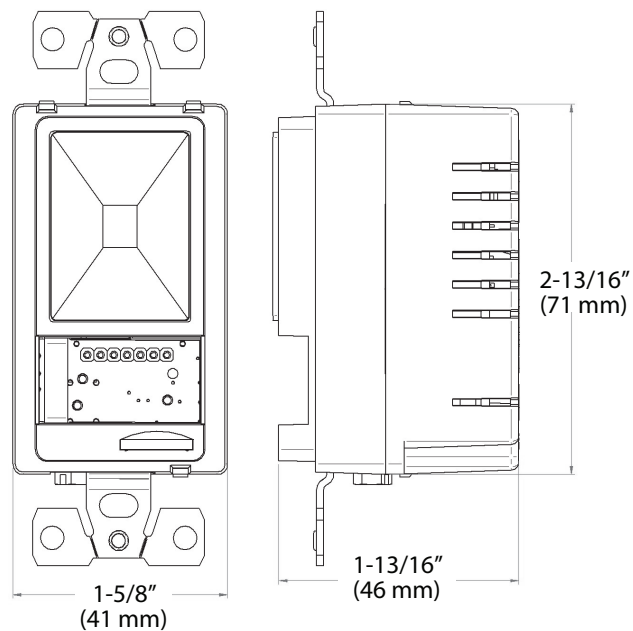
Operating Temperature: 14F to 104F (-10C to 40C)



Interchangeable inserts sold separately



Fits all electrical boxes 3" x 2" x 2.5" and larger



### Dimmer Switch

#### Part #

L-SD3001WA-1

#### Description

120VAC 150W/300W Swidget Dimmer Switch, w/o Insert, White

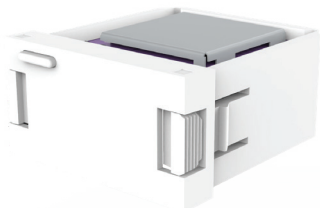
Note: Electrician required for install. Works with all standard Rocker Switch plates (not included).

## STEP 2: CHOOSE YOUR INSERT Class 2



You've selected your device; now add technology without the clutter. Wi-Fi enabled smart control inserts are easily installed, removed or replaced as your needs change or new technology emerges. No need to call an electrician - add your new insert and connect to the Swidget App to control your device from anywhere.

### WI-FI CONTROL INSERT



Insert into any Swidget device

Smart home solution. This Wi-Fi enabled insert gives you complete wireless control, connect to the Swidget App and control your device from anywhere!

#### Features:

2.4GHz, Wi-Fi 6 compatible

Easily replaced, no electrician required

Independent power monitoring

Regular wireless upgrades to expand capabilities right from your Swidget App

Works with Amazon Alexa, Google Assistant and IFTTT

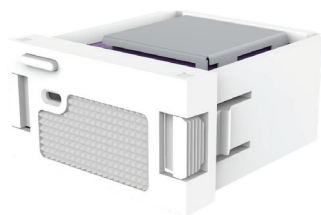
2-Year Limited Warranty

Wireless Standard: Wi-Fi 802.11g  
Average Power Rating: 5VDC @ 40mA (Class 2)  
Device Upgrades: OTA  
Environmental: Indoor only  
Operating Temperature: 14F to 104F (-10C to 40C)

#### Wi-Fi Control Insert

Part #	Description
L-WI000UWA-1	Swidget Wi-Fi Control Insert, White

### WI-FI CONTROL + GUIDE/NIGHT LIGHT INSERT



Insert into any Swidget device

Illuminate the way. The Wi-Fi enabled Guide/Night Light insert provides all the features of a standard night light using high-efficiency LED technology to brighten any dark room or space safely.

#### Features:

2.4GHz, Wi-Fi 6 compatible

Basic night light functionality with an automatic light sensor trigger

Warm white high efficiency LED

Easily replaced, no electrician required

Independent power monitoring

Regular wireless upgrades to expand capabilities right from your Swidget App

Works with Amazon Alexa, Google Assistant and IFTTT

2-Year Limited Warranty

Wireless Standard: Wi-Fi 802.11g  
Device Upgrades: OTA  
LED Color: Warm White  
Trigger: Automated light sensor  
Environmental: Indoor only  
Operating Temperature: 14F to 104F (-10C to 40C)

#### Wi-Fi Control + Guide/Night Light Insert

Part #	Description
L-WI002UWA-1	Swidget Wi-Fi Control + Guide Light Insert, White

## WI-FI CONTROL + MOTION SENSOR INSERT



Smart Home Savings. With occupancy and vacancy detection, this 2-in-1 Wi-Fi enabled insert makes your space more secure and energy efficient.

### Features:

2.4GHz, Wi-Fi 6 compatible

Wireless Infrared Detection (PIR) Panasonic Motion Sensor

Vacancy timer adjustable between 1-60 minutes

120° detection angle / 10' (3 m) detection range

Easily replaced, no electrician required

Independent power monitoring

Regular wireless upgrades to expand capabilities right from your Swidget App

Works with Amazon Alexa, Google Assistant and IFTTT

2-Year Limited Warranty

Wireless Standard: Wi-Fi 802.11g

Device Upgrades: OTA

Detection Angle: 120 degrees

Detection Range: 10' (3 m)

On Time: Adjustable; 1-60 minutes

Environmental: Indoor Only

Operating Temperature: 14F to 104F (-10C to 40C)



Insert into any Swidget device

### Wi-Fi Control + Motion Control Insert

#### Part #

L-WI004UWA-1

#### Description

Swidget Wi-Fi Control + Motion Insert, White

## WI-FI CONTROL + USB CHARGER INSERT

Charge it up. The Wi-Fi enabled USB Charger insert provides a standard Type A USB charger to allow for the fast charging of your devices.

### Features:

2.4GHz, Wi-Fi 6 compatible

USB output up to a 2.0A rating

Class 2 output certified

BC1.2 compliant smart charging configuration

Easily replaced, no electrician required

Independent power monitoring

Regular wireless upgrades to expand capabilities right from your Swidget App

Works with Amazon Alexa, Google Assistant and IFTTT

2-Year Limited Warranty

Wireless Standard: Wi-Fi 802.11g

Output Power Rating: 5VDC +/- 5% @ 2A (Class 2)

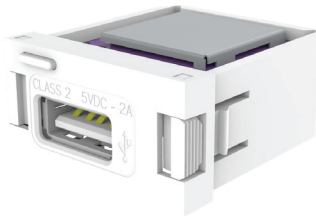
Device Upgrades: OTA

USB Output Connector: Type A

Smart Charge Detection: BC1.2 Compliant

Environmental: Indoor Only

Operating Temperature: 14F to 104F (-10C to 40C)



Insert into any Swidget device

### Wi-Fi Control + USB Charger Insert

#### Part #

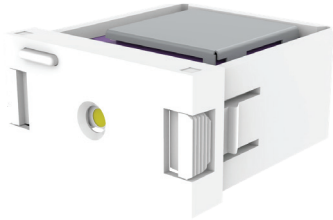
L-WI001UWA-1

#### Description

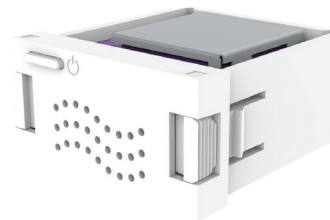
Swidget Wi-Fi Control + USB Insert, White

## SPECIAL ORDER INSERTS

Additional special order items available, contact Tresco® or your local sales representative for more information.



**WI-FI CONTROL + POWER OUT  
LIGHT INSERT**



**WI-FI CONTROL + AIR QUALITY  
SENSOR INSERT**



**WI-FI CONTROL + TEMPERATURE,  
HUMIDITY AND MOTION SENSOR INSERT**

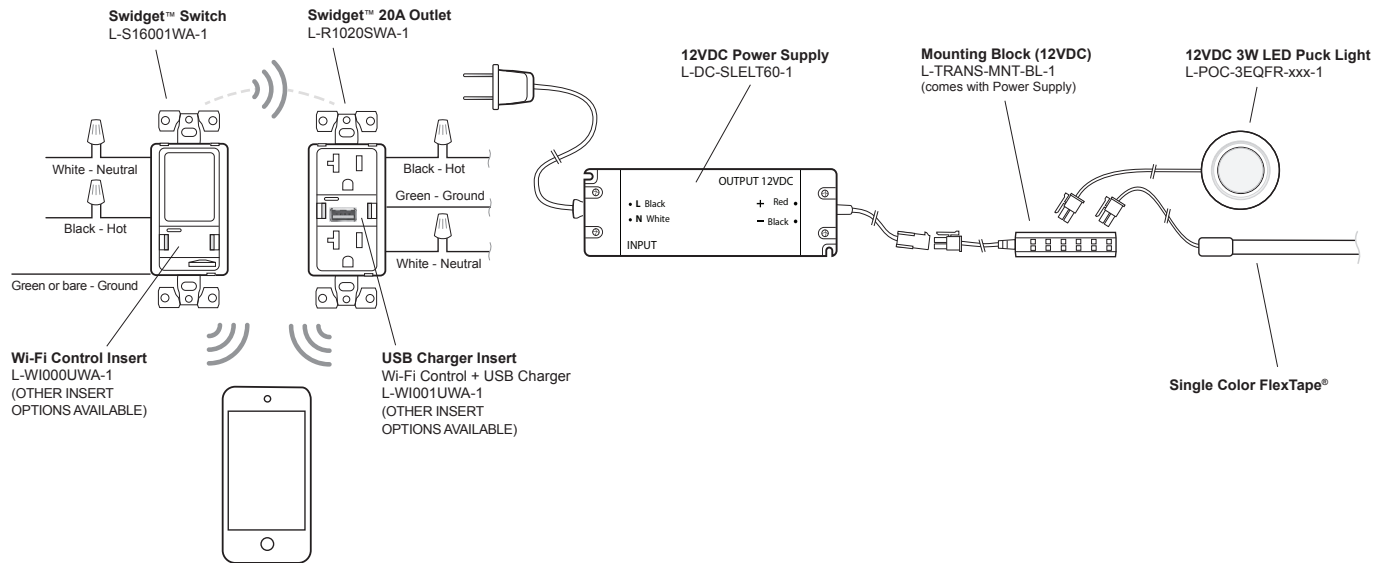


**WI-FI CONTROL + TEMPERATURE AND  
HUMIDITY SENSOR INSERT**



## TYPICAL SETUP

### PLUG-IN POWER SUPPLY



### HARDWIRE POWER SUPPLY

