

Thank you for choosing this quality product. Be sure to check all packaging materials carefully for small parts that may have loosened inside the carton during shipment and place on a non-abrasive surface.

IMPORTANT

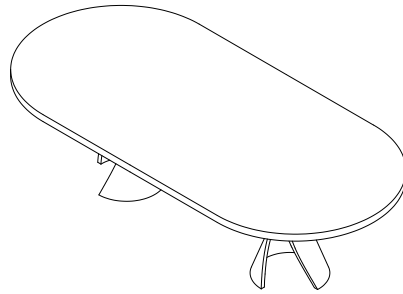
These parts can be cumbersome and heavy to some people, therefore, the assistance of two or more people are recommended in order to prevent personal injury and ensure the furniture is not damaged during the assembly Process.

CARE INSTRUCTIONS

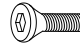

1. Dust often using a clean, soft, dry and lint-free cloth.
2. Blot spills immediately and wipe with a clean, damp, cloth.
3. We do not recommend the use of chemical cleansers, abrasives or furniture polish on our lacquered finish.

PART LIST

- A. [1] TABLETOP
- B. [1] LEFT BASE
- C. [1] RIGHT BASE



HARDWARE LIST

NO.	ITEM	DESCRIPTION	QTY.
1		Allen Bolt	8 pcs.
2		Allen Key	1pc.

INSTRUCTIONS

1. Preset the table bases (B) on your desired location. Distance between the top panels of the bases should be 810mm. See FIGURE 01.
2. Bring the table top (A) and set it on the assembled base. Align the fixed nuts at the bottom of the top to the holes on top of the base. Insert Allen bolts (1) into each fixed nuts through the holes on top of the base, then tighten them by using Allen key (2). DO NOT OVER TIGHTEN. See FIGURE 02.
3. Assembly is complete.

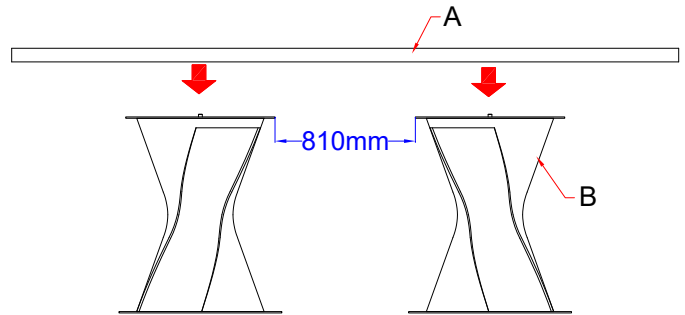


FIGURE 01

FIGURE 02

