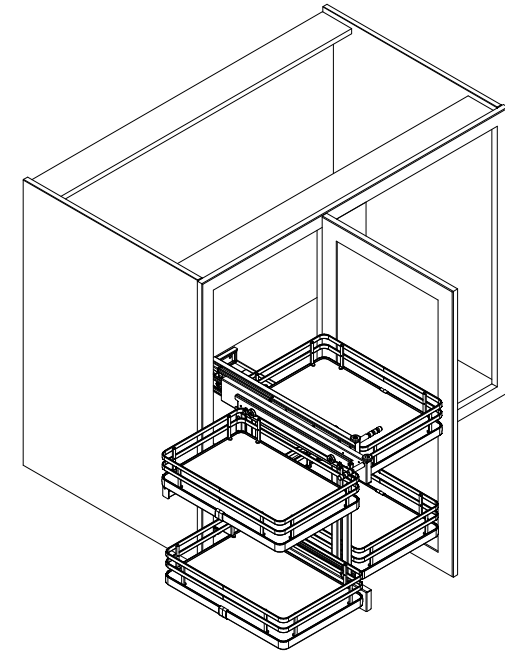


This drawing is the property of Rev-A-Shelf (RAS) and is disclosed in confidence to the extent its subject matter is original to RAS. Any vendor receiving this drawing from RAS shall hold and use this drawing for the sole benefit of RAS and shall not disclose it to, or use or reproduce it for any third party, or perform any act adverse to the interest of RAS with respect to this drawing without the express written permission of RAS. Vendors shall not revise any physical, dimensional or performance characteristic unless authorized by Rev-A-Shelf Engineering.

REV.	DATE	BY	DESCRIPTION OF CHANGE

	AMERICAN PROJECTION	BY	DATE	REV-A-SHELF, INC.		
INCH [MM]		DRAWN	25.04.22	SIZE B	Blind Corner Optimizer With Soft-Closing	
TOLERANCES		MATERIAL	DRAWING NO.	SCALE		
MAT. (WOOD) .XX DEC ±.03 [.8mm]		FINISH	PART NO.	1:10		
(OTHER) .XX ±.02 [.5mm]				SHEET OF		
(ALL) .XXX ±.005 [.13 mm]				1 2		
FRACTIONS ± 1/32 [.8 mm]						



PART DIMENSIONS		
	MIN	MAX
WIDTH	26.47[672.33]	35.27[895.9]
DEPTH	21.59[548.5]	41.9[1064.2]
HEIGHT	21[533.5]	21[533.5]
WEIGHT		
DIAMETER		
RADIUS		
CONTAINER CAPACITY		
CONTAINER UOM		



MIN CABINET OPENING	
WIDTH	15[381]
DEPTH	22.625[574.68]
HEIGHT	21.25[540]

PRODUCT MAX WEIGHT RATING
15lbs/Shelf

SLIDE SPECIFICATIONS				
SLIDE TYPE	HEAVY DUTY	SLIDE EXTENSION	21.66[550]	MAX WEIGHT RATING
SLIDE CLOSING	SOFT CLOSE	SLIDE LENGTH	19.69 [500]	
SLIDE MOUNTING	FLOOR	SLIDE FINISH	ZINC	
				70LB

CUSTOMER DRAWING

This drawing is the property of Rev-A-Shelf (RAS) and is disclosed in confidence to the extent its subject matter is original to RAS. Any vendor receiving this drawing from RAS shall hold and use this drawing for the sole benefit of RAS and shall not disclose it to, or use or reproduce it for any third party, or perform any act adverse to the interest of RAS with respect to this drawing without the express written permission of RAS. Vendors shall not revise any physical, dimensional or performance characteristic unless authorized by Rev-A-Shelf Engineering.

				INCH [MM]				DRAWN		25.04.22		 Inco-Furniture, Inc.			
												SIZE B Blind Corner Optimizer With Soft-Closing			
				TOLERANCES		MAT (WOOD) XX (OTHER) XX (ALL) XXX FRACTIONS		DEC ± .03 [.8mm] ± .02 [.5mm] ± .005 [.13 mm] ± .2 [-.8 mm]		ANGLES ± 1/2		MATERIAL			
												DRAWING NO.			
												SCALE 1:17			
												PART NO.			
												53PSP-15SC-FOG			
												SHEET OF 2 2			
REV.				DATE				BY				DESCRIPTION OF CHANGE			