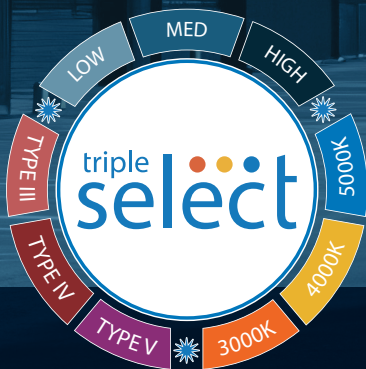


# NICOR<sup>®</sup>



# OAL4

LED AREA LIGHT



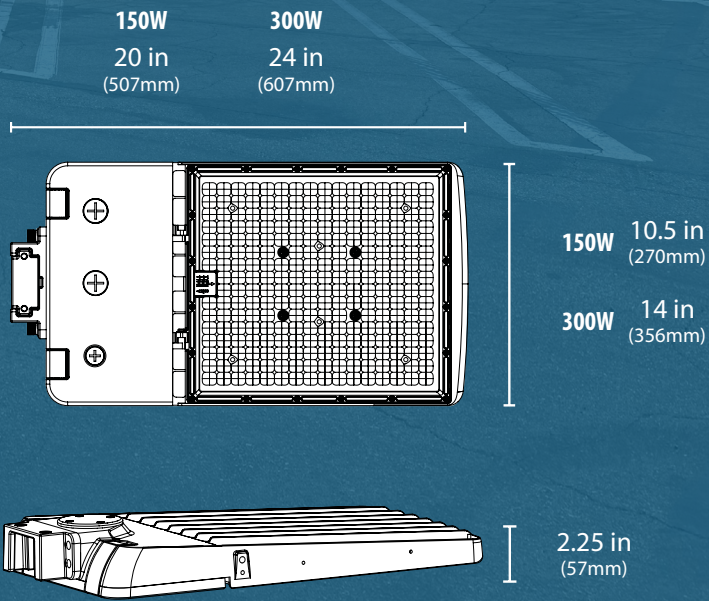


# OAL4

## LED Area Light

Introducing the OAL4 Triple-Select LED Area Light. This versatile lighting solution offers selectable wattage, color temperature (CCT), and beam distribution, ensuring maximum flexibility for various applications. Offering 150/120/100W and 300/240/200W models with 3/4/5K and Type III/IV/V standard customized lighting is as easy as the flick of a switch. Includes an adjustable, multi-function mounting arm (pole+slipfitter) for simpler, quicker installation. Illuminate your space with the power of choice. Whether for parking lots, campuses, pathways, or any large open area, the OAL4 delivers tailored lighting solutions with unparalleled flexibility, efficiency, and reliability.

### Dimensions



## FEATURES

### Innovative Solutions

Available in 150W and 300W, Bronze or White, with 120-277VAC or 277-480VAC options.  
*\*See spec-sheet for ordering information*

### Selectable Distribution

Selectable optics let you switch distribution types instantly, no lens swapping needed!

### Flexible Installation

The OAL4 features a Multi-Mount Arm, combining straight arms, pole arms, and slipfitters into a quick-install dovetail design.



### Photocell Receptacle & Shunt

Every OAL4 comes standard with a 3-pin receptacle and shunt, with an optional 7-pin also available.



**CRI**  
80+



**Lumens**  
14236-45653



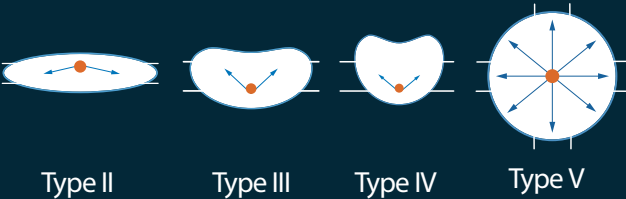
**Lifetime**  
>50,000 hrs



### Selectable Distribution

Choose between two factory-installed Selectable Optics:

TYPE A: Selectable Type III-IV-V  
TYPE B: Selectable Type II-III-IV



### Selectable CCT & Wattage

The OAL4 LED Area light features selectable optic, wattage, and color temperature options via an integrated switch located on the front.



### ACCESSORIES



Adjustable Pole Mounting Arm



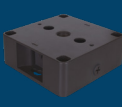
Straight Mounting Arm



Slipfitter Adapter



Trunion Mounting Arm



Wall Mount Box



Front/Back Shield



Side Shield



7-pin Receptacle & Shunt



Microwave Sensor



Remote Control for Sensors

### Ordering Information

Example: OAL4150SUS8BZAS

Series	Version	Wattage	Voltage	CCTs	CRI	Finish	Optic	Daylight Sensor Socket	Motion Sensor Socket
OAL	4	150S	U (120-277V)	S (3K/4K/5K)	8 (80+)	BZ (Bronze)	A (Type III/IV/V)	_ (3Pin Receptacle & Shunt)	S (12V 3-pin Socket)
		300S	H (277-480V)			WH (White)*	B (Type II/III/IV)	7 (7Pin Receptacle & Shunt)**	

Specifications and dimensions subject to change without notice.

\* White available on U (120-277V) models only

\*\* Contact factory for MOQ and lead time.





LIT-OAL4-10PK  
20250108

© 2025 NICOR® • ALL RIGHTS RESERVED

### Warehouse Locations:

Albuquerque, NM  
Buford, GA  
Roseville, CA

**T 800.821.6283**

**F 800.892.8393**

[www.nicorlighting.com](http://www.nicorlighting.com)

