

Ultra Slim Surface Mount **LED** Downlight

SUREFIT™ v3



**Think Inside the J-Box
for Your Next Downlight Solution**



SureFit™ v3 will Revolutionize Your Thinking

The newest version of the SureFit™ Ultra Slim Surface Mount LED Downlight features increased lumen output and efficiency while keeping the same installation compatibility. The DLF will fit most standard 4/O, 4" non-metallic new construction or remodel J-Boxes. Simply mount the fixture directly to the J-Box using the keyhole mounting slots and two screws.

Detachable round steel trims and square die-cast aluminum trims offer a seamless finish in both round and square apertures to enhance the visual aesthetic of any living space. The NICOR SureFit™ is the perfect solution for residential and light commercial spaces including living rooms, bedrooms, home theaters, corridors, office, retail and more.

Ultra Slim, Ultra Revolutionary

Energy Efficient

Dimmable to less than 5%
with most TRIAC dimmers

Delivers 8 Distinct Styles

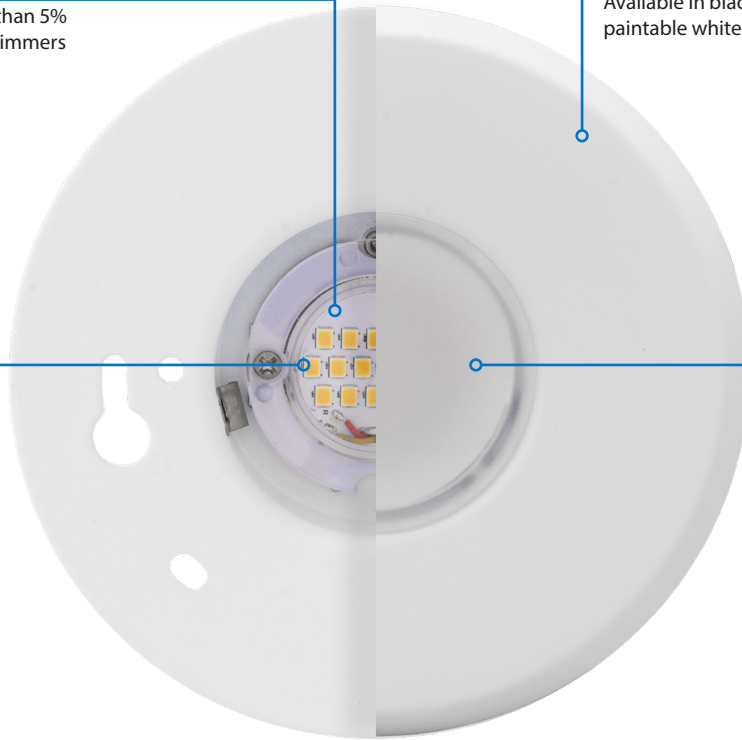
Available in black, nickel and oil-rubbed bronze and
paintable white with either a round or square aperture

High Performance

LEDs offer greater than 90
CRI and R9 greater than 50
for true color rendering

Uniform Light Distribution

Polystyrene diffuser reduces glare
while maximizing lumen output



Thermally Protected

Aluminum housing routes heat away
from electrical components



Custom-Designed, Integrated Driver

Low profile, high efficiency driver eliminates
need for large interior mounting space



Ultra Slim Profile

Tight profile that sits almost flush
to the ceiling to enhance the
visual aesthetic of any space



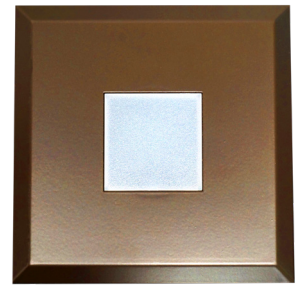
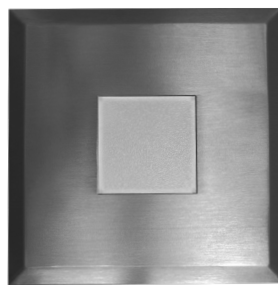
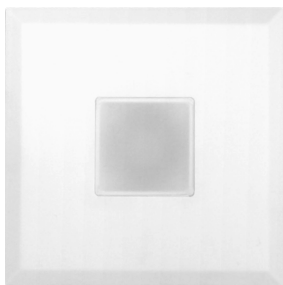
Interchangeable Trim Plates

Removable trim plates offer design
flexibility with a single fixture

Removable, Interchangeable Trims Deliver Eight Distinct Designs

Multiple Color Choices, Versatile Apertures

White • Black • Nickel • Oil-Rubbed Bronze



SUREFIT™ v3

Applications

So Slim It's Sure to Fit Any Application

Junction Box Mounting Applications

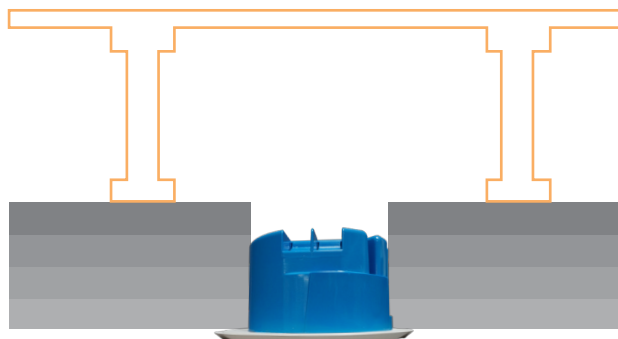
Concrete



Insulation - batting or blown-in



Fire - rated with appropriate J-Box



Framing



Tight Spaces Are Effortless for SureFit™ v3



SUREFIT™ v3

Compatibility and Installation

Speed Up Installation by Mounting Directly to the J-Box

SureFit™ v3 Compatible Junction Boxes

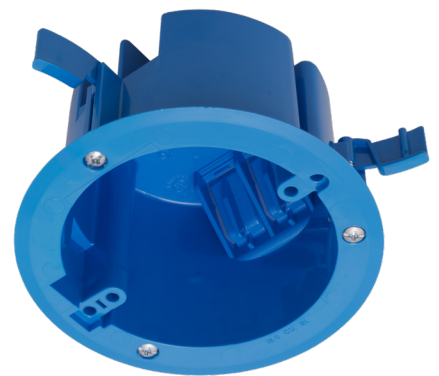
This is a sampling of the junction boxes compatible with SureFit, and is not an exclusive list. NICOR recommends using 20in³ or greater. Check compatibility before installation.



4" octagon box



4" round new work non-metallic box



4" round old work non-metallic box

SureFit™ v3 J-Box Installation



Easy Installation, No Housing Needed

Included screws fasten directly to most any standard 4/0 metallic or non-metallic J-Box



SUREFIT™ v3

Product Information

Construction

- Aluminum housing routes heat away from electrical components
- Custom designed, integrated driver allows for use in metallic and non-metallic 4" and 4/O J-Boxes
- Detachable round steel trim
- Optional square steel trim

Optical System

- Polystyrene diffuser creates uniform distribution without sacrificing lumen output
- Binned within 4-step MacAdams with $\text{duv} < \pm 0.003$
- Utilizes high performing LEDs with 90+ CRI and an $R9 > 50$

Electrical

- Custom slim driver minimizes installation height
- Input voltage of 120VAC, 60Hz
- Dimmable to less than 5% with compatible leading edge (TRIAC) and trailing edge (ELV) dimmers

Finish

- White powder coat finish standard
- Optional trims available in Black, Nickel, and Oil-Rubbed Bronze

Mounting and Installation

- Easy installation in most 4/O and 4" non-metallic new construction and remodel J-Boxes
- Removable trim allows for easy mounting while providing a seamless trim finish
- Fixture mounts directly to J-Boxes with two screws
- Keyhole slots allow quick and easy installation
- Three three-port poke-in connectors included
- Operating temperature of 0° to 104°F (-18°C to 40°C)

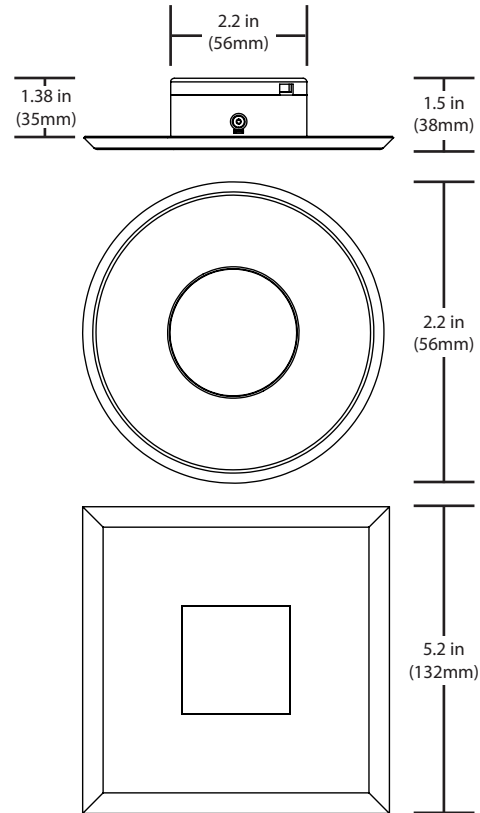
Listings

- RoHS Compliant
- Meets FCC Part 15, Subpart B, Class B standards for conducted and radiated emissions

Warranty

- 5-year limited system warranty standard
- Warranty does not cover product failure due to an overvoltage event (power surge)
- For installations where power surge may be possible, NICOR recommends installing additional surge protection at the electrical distribution panel

Pat. No.: US 10,508,783



Performance Data

Model Number	Lumens	Watts	Lumens/Watt
DLF301202KWH	706	10.1	69.9
DLF301203KWH	720	10.1	71.3
DLF301204KWH	747	10.1	74.0
DLF301205KWH	756	10.1	74.9

*With round white trim

Ordering Information

Example: DLF301203KWH

Series	Version	Voltage	CCT's	Trim Color
DLF	30 (Version 3)	120 (120V)	2K (2700 K)	WH (White)
			3K (3000 K)	
			4K (4000 K)	
			5K (5000 K)	

Accessories

Accessories sold separately

Round Nickel Trim	DLF-2-TRIM-RD-NK
Round Oil-Rubbed Bronze Trim	DLF-2-TRIM-RD-OB
Round Black Trim	DLF-2-TRIM-RD-BK
Round White Trim	DLF-2-TRIM-RD-WH
Square Nickel Trim	DLF-2-TRIM-SQ-NK
Square Oil-Rubbed Bronze Trim	DLF-2-TRIM-SQ-OB
Square Black Trim	DLF-2-TRIM-SQ-BK
Square White Trim	DLF-2-TRIM-SQ-WH

*DLFv2 Trims are compatible with the DLFv3

Warehouse Locations

Albuquerque, NM
Atlanta, GA
Detroit, MI
Folcroft, PA
Houston, TX

Indianapolis, IN
Lombard, IL
Syracuse, NY
Van Nuys, CA

T 800.821.6283

F 800.892.8393


www.nicorlighting.com

2200 Midtown Pl. NE
Albuquerque, NM 87107 USA



LIT-DLF3-10PK
20250205

©2021 NICOR® • ALL RIGHTS RESERVED

NICOR®  **LED**