

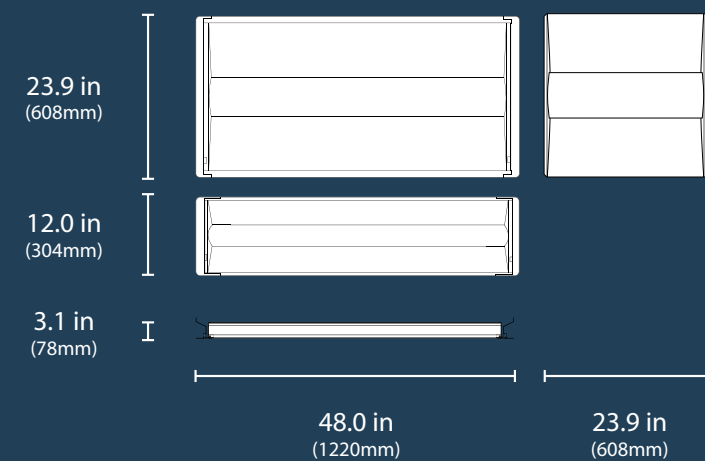


TARS2

Architectural LED Troffer Retrofit Kit

The TARSv2 Architectural LED Troffer Retrofit provides an economical, easy-to-install upgrade from linear fluorescent lighting to a long-lasting and energy-efficient LED solution. The contemporary center lens design delivers a soft natural glow with even illumination and minimized glare, making it an attractive general-purpose ambient lighting solution. The TARSv2 also features a premounted driver with a high-efficiency, maintenance-free LED chamber. Whether in a school, hospital, airport, office or convenience store, NICOR LED troffers bring a stylish and economical lighting solution to all commercial, educational, medical, and retail applications. The CCT and Wattage Selectable design allows for easy adjustment to 3500K/4000K/5000K and a choice of high, medium, or standard light output.

Dimensions



FEATURES

Fast & Easy Installation

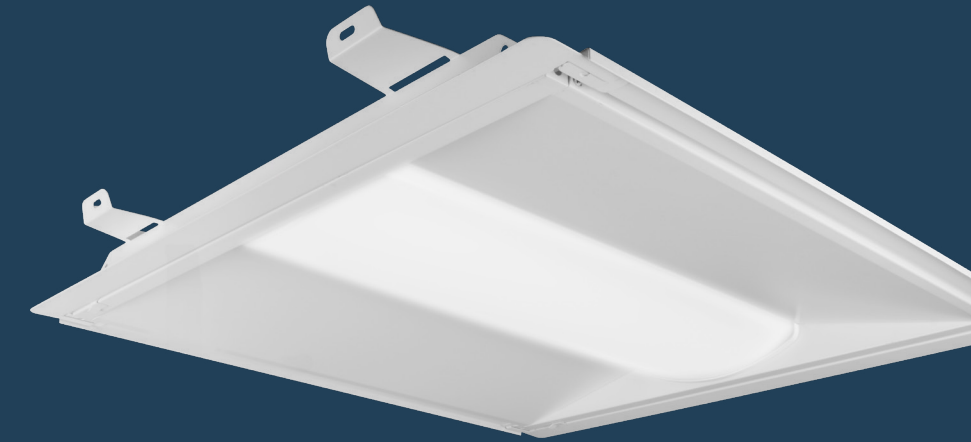
Single-person retrofit with a seamless four-rail design for quick LED upgrades.

Efficient Design

Premounted driver and maintenance-free LED chamber for reliable performance.

Smart Controls Available

NLC-compatible with BLE mesh for dimming, occupancy sensing, and daylight harvesting.



Superior Light Quality

Smooth, even illumination with no visible diodes, hot spots, or shadows for soft and comfortable ambient lighting.

Selectable CCT

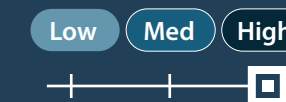
External switch on the back allows easy CCT Selection: 3500K, 4000K, or 5000K



Selectable Wattage

External switch on the back allows easy wattage selection:

- 1'x4': 20W-31W
- 2'x2': 20W-31W
- 2'x4': 34W-46W



Ordering Information

Example: TARS224U

Series	Version	CCTs	Size	Voltage	Controls	Emergency (Optional)
TAR	2	S (Selectable: 35K/40K/50K)	14 (1' x 4')	U (120-277V)	Blank (none)	E1 (EMB045)
			22 (2 x 2')		NI (NLC Controls)	E2 (EMB080)
			24 (2' x 4')			

Specifications and dimensions subject to change without notice. 1.) Only available by special order.