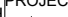
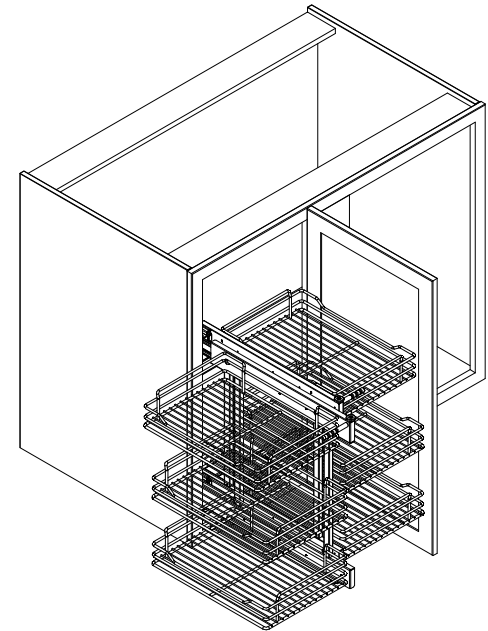


This drawing is the property of Rev-A-Shelf (RAS) and is disclosed in confidence to the extent its subject matter is original to RAS. Any vendor receiving this drawing from RAS shall hold and use this drawing for the sole benefit of RAS and shall not disclose it to, or use or reproduce it for any third party, or perform any act adverse to the interest of RAS with respect to this drawing without the express written permission of RAS. Vendors shall not revise any physical, dimensional or performance characteristic unless authorized by Rev-A-Shelf Engineering.

REV.	DATE	BY	DESCRIPTION OF CHANGE

INCH [MM]	AMERICAN PROJECTION		DRAWN	BY	DATE	REV-A-SHELF®, INC.		
				25.05.14	SIZE B	Blind Corner Optimizer With Soft-Closing		
TOLERANCES			MATERIAL			DRAWING NO.	SCALE	
MAT. (WOOD) .XX (OTHER) .XX (ALL) .XXX FRACTIONS			DEC. ± .03 [.8mm] ± .02 [.5mm] ± .005 [.13 mm] 1/32 [.8 mm]			1:10		
			FINISH			PART NO.	SHEET OF	
						53PSP3-15SC-CR	1 2	

CUSTOMER DRAWING




PART DIMENSIONS		
	MIN	MAX
WIDTH	26.48[672.5]	35.37[898.5]
DEPTH	21.59[548.5]	41.9[1064.2]
HEIGHT	23.84[605.5]	23.84[605.5]
WEIGHT		
DIAMETER		
RADIUS		
CONTAINER CAPACITY		
CONTAINER UOM		

MIN CABINET OPENING	
WIDTH	15[381]
DEPTH	22.625[574.68]
HEIGHT	24.09[611.89]

PRODUCT MAX WEIGHT RATING
15lbs/Shelf

SLIDE SPECIFICATIONS				
SLIDE TYPE	HEAVY DUTY	SLIDE EXTENSION	21.66[550]	MAX WEIGHT RATING
SLIDE CLOSING	SOFT CLOSE	SLIDE LENGTH	19.69 [500]	
SLIDE MOUNTING	FLOOR	SLIDE FINISH	ZINC	
				70LB

## CUSTOMER DRAWING

				INCH [MM]	PROJECTION 	DRAWN	25.05.14	NSP FASTENER, INC.	
								SIZE B	Blind Corner Optimizer With Soft-Closing
				TOLERANCES		MATERIAL		DRAWING NO.	
				MAT.	DEC	ANGLES		SCALE	
				(WOOD) .XX	± .03 [.8mm]	± 1/2		1:17	
				(OTHER) .XX	± .02 [.5mm]		FINISH	PART NO.	SHEET OF
				(ALL) .XXX	± .05 [.13 mm]			5PSP3-15SC-CR	2 2
				FRACTIONS	± 1/32 [.8 mm]				
REV.	DATE	BY	DESCRIPTION OF CHANGE						