

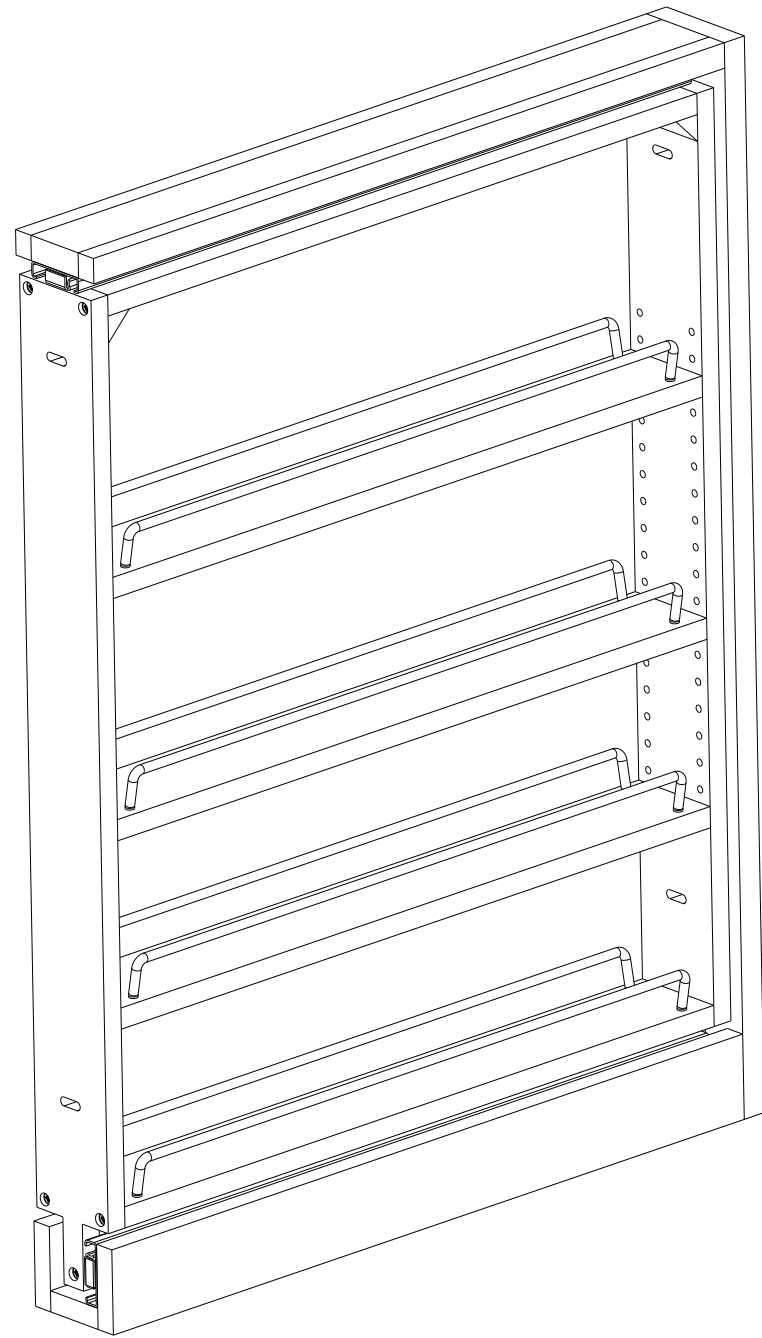
- NOTES:  
 1. SEE 432 SERIES FILLER PULL-OUT INSTRUCTIONS FOR INSTALLATION  
 2. RECOMMENDED SCREW SIZE FOR INSTALLATION: #8 X 1 1/4"

CUSTOMER DRAWING

This drawing is the property of Rev-A-Shelf (RAS) and is disclosed in confidence to the extent its subject matter is original to RAS. Any vendor receiving this drawing from RAS shall hold and use this drawing for the sole benefit of RAS and shall not disclose it to, or use or reproduce it for any third party, or perform any act adverse to the interest of RAS with respect to this drawing without the express written permission of RAS. Vendors shall not revise any physical, dimensional or performance characteristic unless authorized by Rev-A-Shelf Engineering.

REV.	DATE	BY	DESCRIPTION OF CHANGE
B	11/6/07	PFC	ECN07-076
A	9/5/07	PFC	ECN07-068

INCH [MM]	AMERICAN PROJECTION 	BY	DATE	REV-A-SHELF, INC.	
		DRAWN	HLF 10/22/07	SIZE B	3" BASE FILLER 432
TOLERANCES MAT. DEC. (WOOD) .XX ±.03 [.8mm] (OTHER) .XX ±.02 [.5mm] (ALL) .XXX ±.005 [.13 mm] FRACTIONS ±1/32 [.8 mm]		ANGLES ±1/2°	MATERIAL	DRAWING NO. 432-BFXXXX-3C	SCALE 0.250
			FINISH	PART NO. 432-BFXXXX-3C	SHEET OF 1 2



- NOTES:
- SEE 432 SERIES FILLER PULL-OUT INSTRUCTIONS FOR INSTALLATION
  - RECOMMENDED SCREW SIZE FOR INSTALLATION #8 X 1 1/4"

This drawing is the property of Rev-A-Shelf (RAS) and is disclosed in confidence to the extent its subject matter is original to RAS. Any vendor receiving this drawing from RAS shall hold and use this drawing for the sole benefit of RAS and shall not disclose it to, or use or reproduce it for any third party, or perform any act adverse to the interest of RAS with respect to this drawing without the express written permission of RAS. Vendors shall not revise any physical, dimensional or performance characteristic unless authorized by Rev-A-Shelf Engineering.

PART DIMENSIONS	
WIDTH	3.00 [76,2]
DEPTH	23.00 [584,2]
HEIGHT	30.00 [762]

NOTE:  
MCO: N/A; MOUNTS BETWEEN CABINETS

PART NO.	SLIDE CLOSING
432-BFBBSC-3C	SOFT
432-BF-3C	NORMAL

PRODUCT MAX WEIGHT RATING
BMHA STANDARDS

SLIDE SPECIFICATIONS				
SLIDE TYPE	BALL BEARING	SLIDE EXTENSION	FULL	MAX WEIGHT RATING
SLIDE CLOSING	SEE CHART	SLIDE LENGTH	550MM	
SLIDE MOUNTING	N/A	SLIDE FINISH	ZINC	100 LB

CUSTOMER DRAWING

REV.	DATE	BY	DESCRIPTION OF CHANGE	INCH [MM]	AMERICAN PROJECTION	DRAWN	BY	DATE	REV-A-SHELF, INC.	
B	11/6/07	PFC	ECN07-076				HLF	10/22/07	SIZE B	3" BASE FILLER 432
A	9/5/07	PFC	ECN07-068						DRAWING NO.	432-BFXXXX-3C
									SCALE	0.200
									PART NO.	432-BFXXXX-3C
									SHEET	2 OF 2

TOLERANCES		ANGLES
MAT.	DEC.	±1/2°
(WOOD)	.XX ±.03 [.8mm]	
(OTHER)	.XX ±.02 [.5mm]	
(ALL)	.XXX ±.005 [.13 mm]	
FRACTIONS	±1/32 [.8 mm]	