

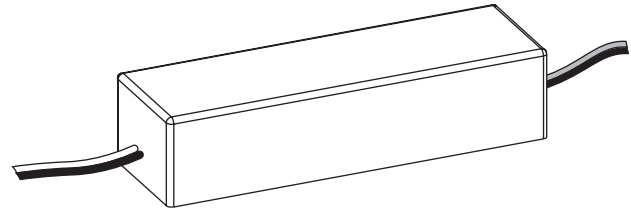
# Tetra® LED Systems Power Supply


**24  
Volt**

GEPS24-25U-EU (220-240 VAC input/24VDC output/25W)

## Power Supply Features

- Supports Tetra PowerStrip DS, Tetra miniStrip DS, Tetra EdgeStrip, Tetra Contour and Tetra Contour LS LED lighting systems
- Damp location rated
- SELV Equivalent
- 220-240 VAC input
- IP66 rated: separate enclosure required



## BEFORE YOU BEGIN

Read these instructions completely and carefully.

**BG** Българската версия на инструкциите за инсталация и информация за безопасност могат да бъдат намерени на следния адрес: <https://products.gecurrent.com/eu>

**CS** Návod k montáži a bezpečnostní informace v češtině najdete zde: <https://products.gecurrent.com/eu>

**DA** Den danske version af installationsvejledningen og sikkerhedsoplysninger kan findes på følgende placering: <https://products.gecurrent.com/eu>

**DE** Die deutsche Version der Installationsanleitung und Sicherheitsinformationen finden Sie in folgendem Verzei: <https://products.gecurrent.com/eu>

**EL** Μπορείτε να βρείτε την ελληνική εκδοχή των οδηγιών εγκατάστασης και των πληροφοριών ασφάλειας στην εξής τοποθεσία: <https://products.gecurrent.com/eu>

**ES** La versión española de las instrucciones de instalación y la información sobre seguridad puede encontrarse en la siguiente ubicación: <https://products.gecurrent.com/eu>

**ET** Eestikeelse paigaldusjuhendi ja ohutusnõuded leiate aadressilt: <https://products.gecurrent.com/eu>

**FI** Asennusohjeiden ja turvallisuuatietojen suomenkielinen versio löytyy seuraavasta paikasta: <https://products.gecurrent.com/eu>

**FR** La version française des instructions d'installations et information de sécurité est disponible à l'adresse suivante: <https://products.gecurrent.com/eu>

**HR** Hrvatska verzija priručnika za ugradnju i sigurnosnih informacija nalazi se na sljedećoj lokaciji: <https://products.gecurrent.com/eu>

**HU** A telepítési útmutató és a biztonságos információk magyar nyelvű változata az alábbi címen található: <https://products.gecurrent.com/eu>

**IT** La versione italiana del manuale di installazione e sicurezza può essere reperita nella seguente sezione: <https://products.gecurrent.com/eu>

**LT** Lietuviška diegimo instrukcijos ir saugos informacijos versija galima rasti šioje vietoje: <https://products.gecurrent.com/eu>

**LV** Uzstādīšanas instrukciju un drošības informāciju latviešu valodā var atrast šeit: <https://products.gecurrent.com/eu>

**NL** De Nederlandse versie van de installatie-instructies en veiligheidsinformatie kan op de volgende locatie worden gevonden: <https://products.gecurrent.com/eu>

**PL** Polską wersję instrukcji instalacji oraz informacje dotyczące bezpieczeństwa można znaleźć w następującej lokalizacji: <https://products.gecurrent.com/eu>

**PT** A versão em Português das instruções de instalação e das informações de segurança pode ser encontrada na seguinte localização: <https://products.gecurrent.com/eu>

**RO** Versiunea în limba română a instrucțiunilor de instalare și a informațiilor de siguranță pot fi găsite la: <https://products.gecurrent.com/eu>

**SV** Ni hittar den svenska versionen av installationsanvisningarna och säkerhetsinformationen på följande plats: <https://products.gecurrent.com/eu>

**SL** Previdnostna opozorila in varnostne informacije so na zadnji strani vodnika za namestitev. Pred začetkom namestitve izdelka jih skrbno preberite: <https://products.gecurrent.com/eu>

**SK** Slovenskú verziu montážnej príručky a bezpečnostných instrukcií nájdete na nasledujúcej lokalite: <https://products.gecurrent.com/eu>

For the latest North American install guides for your product go to: <https://products.gecurrent.com/led-signage-lighting>

For the latest European install guides for your product go to: <https://products.gecurrent.com/eu>

## ⚠ WARNING / AVERTISSEMENT

### RISK OF ELECTRIC SHOCK

- Disconnect power at fuse box or circuit breaker before servicing or installing product.
- Properly ground Tetra® power supply.

### RISK OF FIRE

- Use only approved wire for input/output connection. Minimum size 18 AWG (0.82 mm<sup>2</sup>).
- Follow all local codes.

### RISQUES DE DÉCHARGES ÉLECTRIQUES

- Coupez l'alimentation électrique à la boîte de fusibles ou au disjoncteur avant l'entretien ou l'installation du produit.
- Assurez-vous de correctement mettre à terre le bloc d'alimentation Tetra®.

### RISQUES D'INCENDIE

- N'utilisez que des fils approuvés pour les entrées/sorties de connexion. Taille minimum 18 AWG (0.82 mm<sup>2</sup>).
- Respectez tous les codes locaux.

**⚠ CAUTION / ATTENTION**

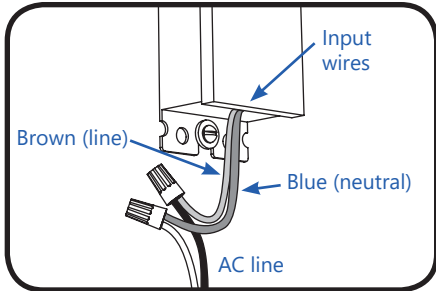
**RISK INJURY**

- While performing installations described, gloves, safety glasses or goggles should be worn.

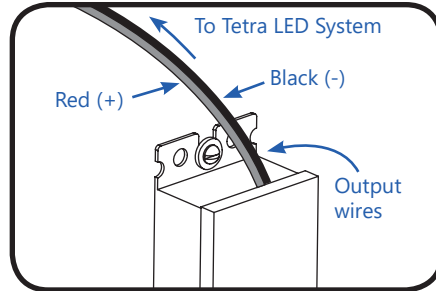
**RISQUES DE BLESSURE**

- Lors de l'exécution des installations décrites, des gants, des lunettes de sécurité ou des lunettes de protection doivent être portées.

**Power Supply Installation**



- 1 Connect the AC line to the brown (line) and blue (neutral) input wires of the power supply using 18-14 AWG (0.82-2.08 mm<sup>2</sup>) twist-on wire connectors.



- 2 Connect the supply wire that is attached to the Tetra LED System to the red (+) and black (-) output wires of the power supply as outlined in the "Electrical Connections" section of your LED system's Installation Instructions.

**NOTE: Power Supply Loads**

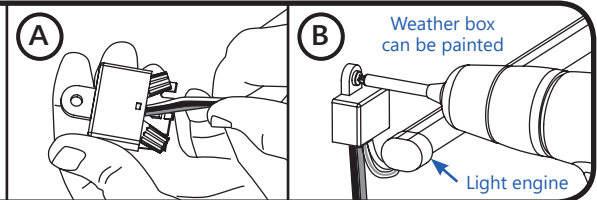
Exceeding maximum load will cause the power supply to shut down. Once the excess load is removed, cycle the input power to restart the power supply.

Specific load information for the supported LED systems can be found in the "Power Supply Specifications" section on the next page.

**NOTE:** When installing power supply, connect to the appropriate sized building breaker or disconnect device for line and neutral connections, in accordance with local, state or country regulations.

**OPTIONAL**

- A Weather Box (GEXNWB2) may be used to house and seal Class 2 connections.
- A) Insert wire connectors into weather box. Fill with electrical grade silicone and close box.
  - B) Secure the weather box using a #6 or #8 (M2 or M3) screw.



**Retrofit Instructions**

1. **(Existing Signs Only)** Prior to installation, survey the site for information regarding power and accessibility inside and outside the building. Ensure that the branch circuit supplying the existing transformer or ballast will be within the voltage ratings of the new LED power supply, and have a current rating not exceeding 20A, or that permitted by applicable local, state, or country electrical codes (whichever is less).
2. **(Existing Signs Only)** Remove the existing lighting equipment to be replaced, such as neon tubing or fluorescent tubes; and associated transformers and ballasts. Care should be taken not to break the existing neon or fluorescent tubes. **NOTE:** Follow all federal and local regulations when disposing of neon tubing, fluorescent tubes, transformers and ballasts.
3. **(Existing Signs Only)** If removal of the existing lighting equipment eliminates the disconnect switch, as required by applicable local, state, or country electrical codes; a new disconnect switch must be installed.
4. **(Existing Signs Only)** Make sure the removal of lighting equipment does not compromise the integrity of the sign body (i.e. water intrusion). Fill in all holes 0.5 in. (13 mm) or smaller with the appropriate amount of rated caulk or sealant. For holes greater than 0.5 in. (13 mm), use an aluminum or zinc coated steel patch with rivets and sealant.
5. Using the layout guidelines within the LED module installation instructions, determine required number of LED modules required to illuminate the sign.
6. Using the applicable LED module maximum Loading chart, determine the number of Tetra Class 2 Power Supplies required to power the number of LED modules required to illuminate the sign, so as not to overload any single power supply output.
7. Follow the LED module instructions to properly mount the LED modules.
8. Connect the DC output of the power supply to the LED modules using the Power Supply Installation instructions above.
9. Connect the power unit to the supply in accordance with the applicable local, state, and country electrical codes, and the Power Supply Installation instructions above.
10. If required, the disconnect switch shall be installed by qualified personnel, in accordance with applicable local, state, and country electrical codes.

Power Supply Specifications

Performance Data	Min	Typical	Max
Input Voltage (VAC)	194	220-240	264
Input Frequency (Hz)	-	50/60	-
Input Current (A)	0.15 (240VAC)	-	0.2 (194VAC)
Output Voltage (VDC)	23	24	25
Output Current (ADC)	-	-	1.0
Output Power (W)	-	-	25
Environmental Operating Temperature Range	-25°C	+25°C	+50°C*
Environmental Humidity (non-condensing)	10%	-	95%
Environmental Storage Temperature Range	-40°C	-	+70°C
Environmental Rating	IP66 rated: separate enclosure required		
Dimensions	5.2 in. x 1.6 in. x 1.2 in. (133 mm x 30.5 mm x 40 mm)		

\* Maximum case temperature is 75°C

Supports Tetra Products	SKUs	Rated Watts	Maximum Load	Remote Mounting Distance			
				18 AWG/ 0.82 mm <sup>2</sup>	16 AWG/ 1.31 mm <sup>2</sup>	14 AWG/ 2.08 mm <sup>2</sup>	12 AWG/ 3.31mm <sup>2</sup>
Tetra PowerStrip DS	GEDS71-1, GEDS50-1, GEDS41-1, GEDS32-1	4.8W/module	3 modules/ 4.1 ft. (1.26 m)	120 ft. (36.6 m)	-	-	-
	GEDSH71-2, GEDSH50-2, GEDSH41-2, GEDSH32-2	5.8W/module	3 modules/ 4.4 ft. (1.33 m)	120 ft. (36.6 m)	-	-	-
Tetra PowerStrip HO	GESS24H71-1, GESS24H50-1, GESS24H41-1, GESS24H32-1	2.9W/module	6 modules/ 6.5 ft. (1.98 m)	120 ft. (36.6 m)	-	-	-
Tetra miniStrip DS	GEWHBDP6, GEWWBDP6-50K, GEWWBDP6-41K, GEWWBDP6	2.20W/module	9 modules/ 9 ft. (2.74 m)	120 ft. (36.6 m)	-	-	-
	GEBDH71-1, GEBDH50-1, GEBDH41-1, GEBDH32-1	2.98W/module	7 modules/ 7 ft. (2.13 m)	120 ft. (36.6 m)	-	-	-
Tetra EdgeStrip	GEWHBIP2, GEWWBIP2-50K, GEWWBIP2-41K, GEWWBIP2	2.40W/module	9 modules/ 9 ft. (2.74 m)	120 ft. (36.6 m)	-	-	-
	GEBIH71-1, GEBIH50-1, GEBIH41-1, GEBIH32-1	5.40W/module	4 modules/ 4 ft. (1.22 m)	120 ft. (36.6 m)	-	-	-
F12 LFL	GEF12T12DHOLED, GEF12T12CWHOLED, GEF12T12SGNHOLED	5.8W/module	3 modules/ 4.4 ft. (1.33 m)	120 ft. (36.6 m)	-	-	-
Tetra Contour LS	GEXNLRD-1	1.30W/ft. (strip)	16 ft. (4.88 m)	20 ft./6.1 m	-	-	-
	GEXNLBL-1, GEXNLGL-1	1.73W/ft. (strip)	12 ft. (3.66 m)	20 ft./6.1 m	-	-	-
	GEXNL65-1, GEXNL32-1	3.17W/ft. (strip)	6 ft. (1.83 m)	20 ft./6.1 m	-	-	-
Tetra Contour	GEXNBL-1, GEXNGL-1, GEXNRD-1	1.52W/ft. (Strip)	14 ft. (4.27 m)	20 ft./6.1 m	-	-	-
	GEXNYG-1, GEXNRC-1	2.27W/ft. (Strip)	8 ft. (2.44 m)	20 ft./6.1 m	-	-	-
	GEXN65-1, GEXN32-1	3.17W/ft. (Strip)	6 ft. (1.83 m)	20 ft./6.1 m	-	-	-

This product is intended to be used as a lamp control gear that is installed after the mains control switch.

Conforms to the following standards:

